

This page and pages like this should not be on doc, because it is not about documenting Tiki, the application. Please see [where to move it](#).

# Eclipse

Eclipse is an open source community whose projects are focused on building an open development platform comprised of extensible frameworks, tools and runtimes for building, deploying and managing software across the lifecycle. A large and vibrant ecosystem of major technology vendors, innovative start-ups, universities, research institutions and individuals extend, complement and support the Eclipse platform. [New to Eclipse?](#)



Screenshots at <http://eclipse.org>

Eclipse Home page:  
<http://www.eclipse.org>

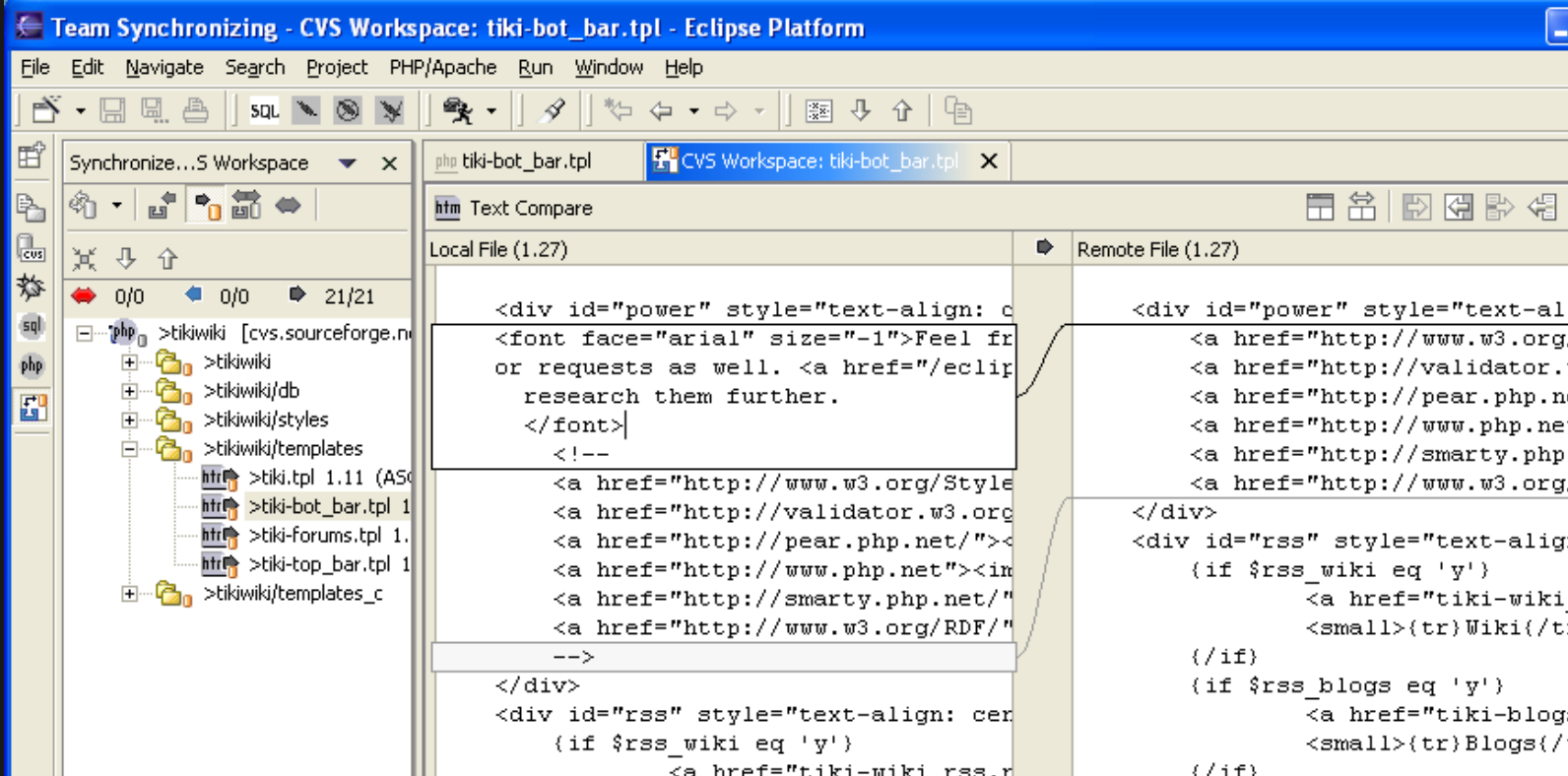
## ECLIPSE CVS COMPARE

*Comparing local and CVS versions of files with Eclipse*

This is a great feature in the Eclipse IDE that allows you to visually see what changes are in both, local and remote CVS versions of files. Even better, you can edit them and save them while comparing them.

Eclipse's **Synchronize** feature shows you how many incoming, outgoing and conflicting files exists. It then creates a browsable directory structure for you to quickly view, compare and edit these files.

See the example picture below. It shows we have 21 outgoing, no incoming and no conflicting changes.



Comparing versions in Eclipse

## ECLIPSE CVS BRANCHES

*How to checkout a certain CVS Branch of tikiwiki with Eclipse*

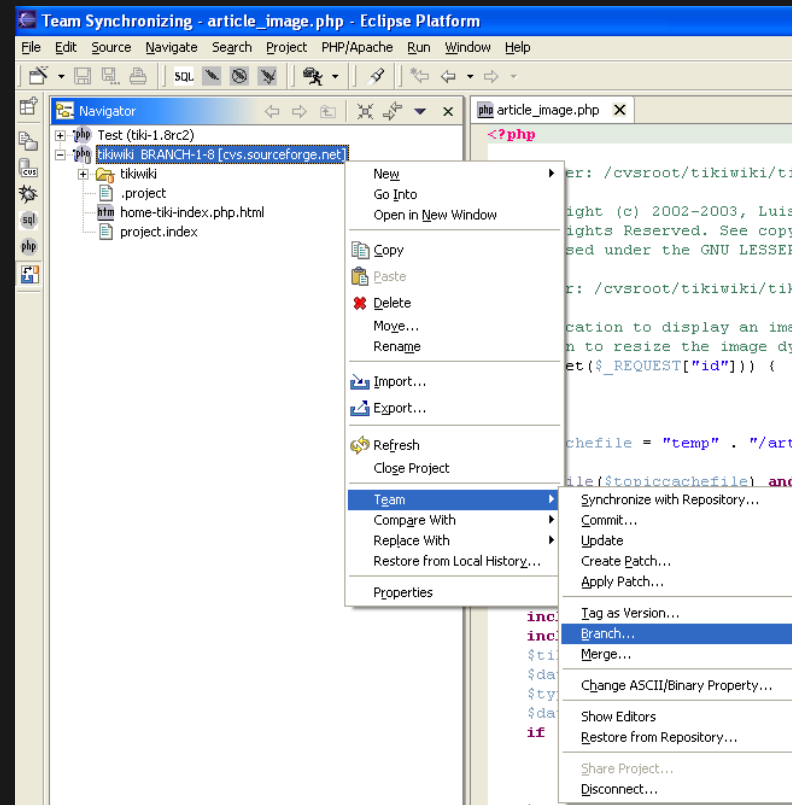
This page shows you how to checkout a certain CVS Branch of tikiwiki with Eclipse. It is not very intuitive but it is very useful and a must for those working with Eclipse.

I am assuming you already have Eclipse setup and working with the latest tikiwiki HEAD checked out. If you have not gotten this far yet. Do a search here for the pages that can get you that far.

The pictures are large but explain it well

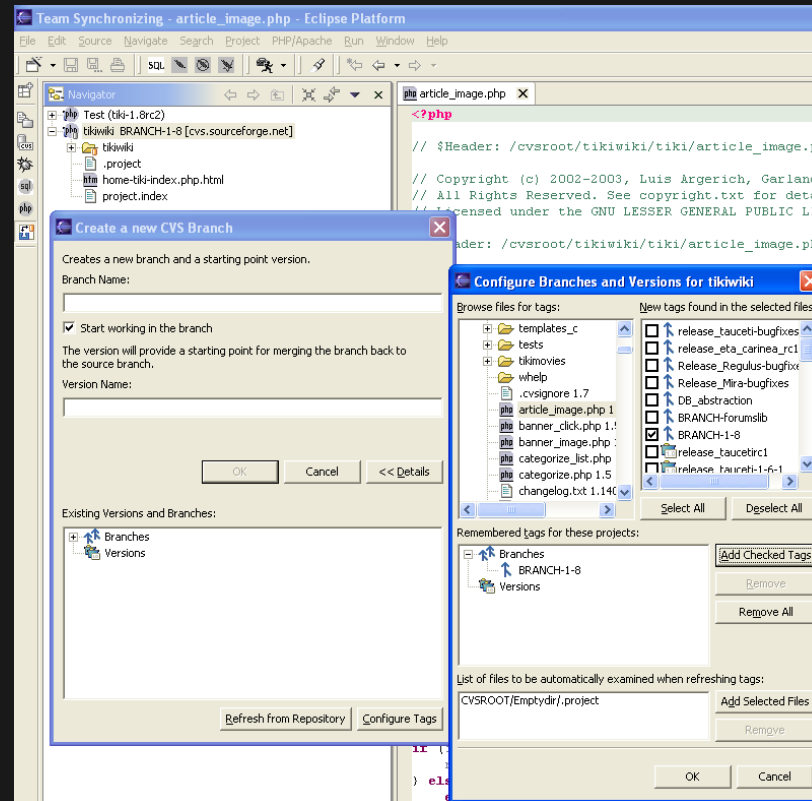
First you must tell Eclipse about the new branch.

Right click on your tikiwiki project and follow the menus below.



- Click "Details"
- Click "Configure Tags"
- Browse the tiki directory to the first PHP file and select it.
- All the versions and branches should appear for that file on the right.
- Select "Deselect All"
- Check off the Branch you are interested in. (i.e. BRANCH-1-8)
- Click "Add Checked Tags"

- Click OK
- Finish up by naming your Branch and clicking OK again.



Now it's time to update your local files with the new Branch you selected.

**WARNING** This procedure will delete all files in your project directory no matter if they are part of the CVS tree or not. If you have any files you want to save, back them up now.

Now

- Click right on your tikiwiki project
- Click "Replace with"

- Click "Another Branch of version"
- Select your Branch and follow the steps.
- You may have to delete the contents of you template\_c directory manually if you get errors that it can not delete these files. Otherwise you're done.

