

# Background on Siteground

Siteground.com is a typical Fantastico host and one of the [Tiki friendly hosts](#) so it is used as an example for this documentation. All other Fantastico hosts will be very similar. Shared hosting provides mainly an inexpensive, easy hosting service for low traffic wikis. Their customer service is very good, and their interface is user friendly, but their servers are heavily loaded and sometimes [Tiki performance](#) is kinda slow. Overall a good bet for a starter wiki host.

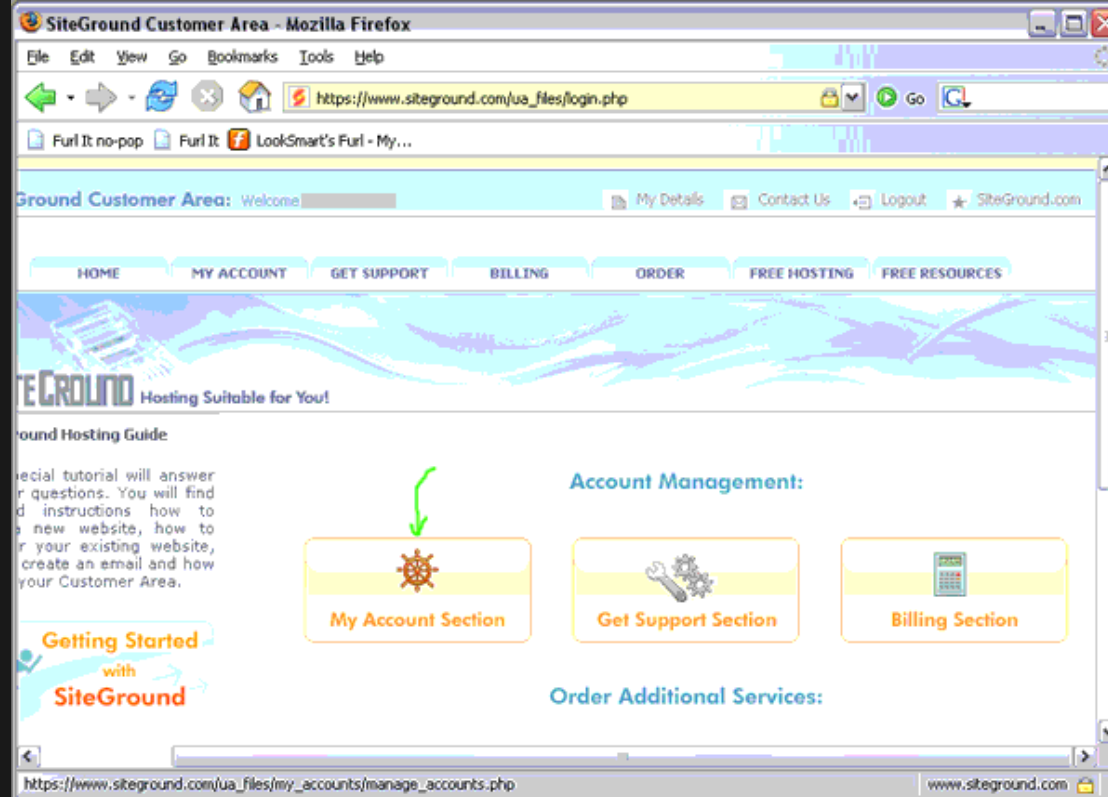
- Includes CPanel and Fantastico - includes installation through fantastico and webanalysis and other tools through cpanel

## Installation

After securing an account and choosing a domain name, installation is straightforward. Installation is either [install by FTP](#), or with Fantastico with siteground you cannot use [SSH](#).

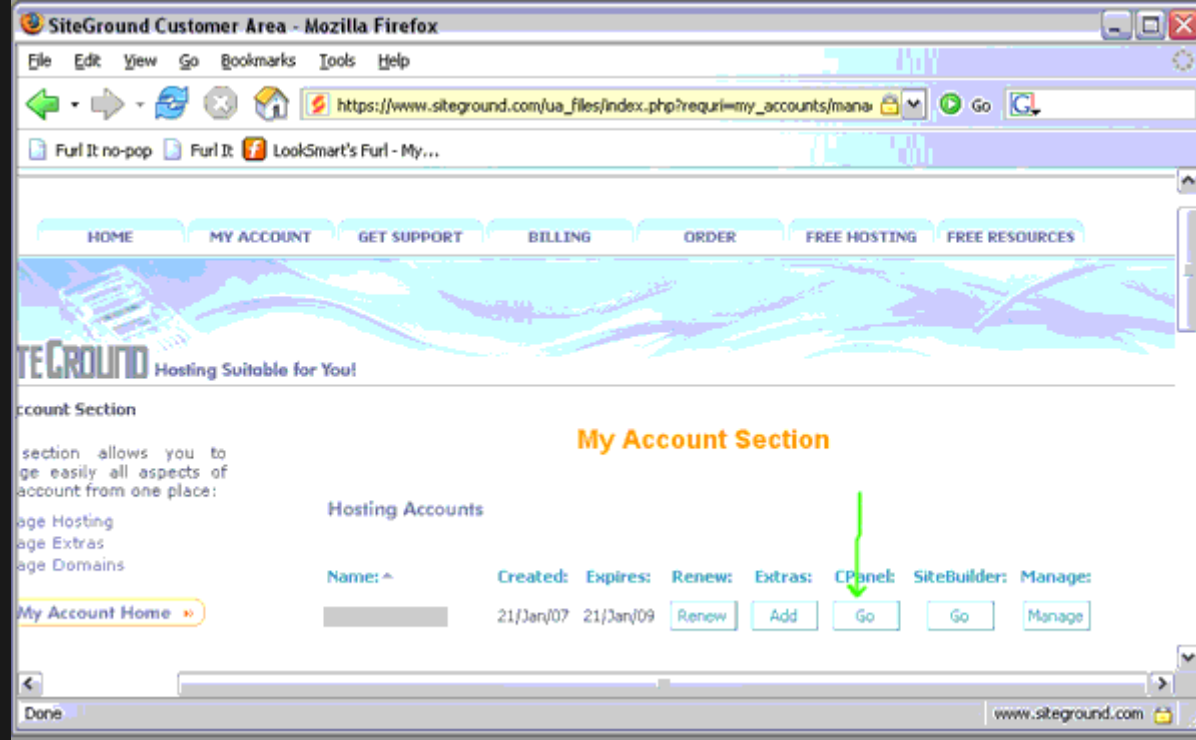
### MANAGE YOUR ACCOUNT.

Cpanel is a utility that allows you to manage your site without knowing unix or programming. To find cpanel, login, and click as shown below.



## ACCESS CPANEL

You'll see the following options. Click on cpanel and login.



## ACCESS FANTASTICO

When CPanel comes up, ignore most of it for now. Click on Fantastico at the bottom.

CPANEL 10

Welcome  Last login from: 127.0.0.1

Please update your contact information here.

**General account information:**

Hosting package	siteground
Shared Ip Address	
Subdomains	4 / unlimited
Parked Domains	3 / unlimited
Addon Domains	3 / 3
MySQL Databases	5 / unlimited
Postgresql Databases	0 / unlimited
Disk Space Usage	228.95 Megabytes
MySQL Disk Space	19.67 Megabytes
Disk space available	249771.05 Megabytes
Bandwidth (this month)	48.66 Megabytes
Email Accounts	0 / unlimited
Email Forwarders	0
Auto-responders	0
Email Filters	0
Ftp Accounts	3 / unlimited

**General server information:**

Operating system	Linux
Kernel version	2.6.9-42.0.3.ELsmp
Machine Type	i686
Apache version	1.3.37 (Unix)
PERL version	5.8.7
Path to PERL	/usr/bin/perl
Path to sendmail	/usr/sbin/sendmail

Mail Webmail Parked Domains Addon Domains FTP Manager

File Manager Disk Space Usage Password Protect Directories Error pages Subdomain

MySQL MySQL@ Databases PostgreSQL Databases Redirects FrontPage@ Extensions Web/FTP Stats

Raw Access Logs Raw Log Manager Error log Subdomain Stats PhpMyChat

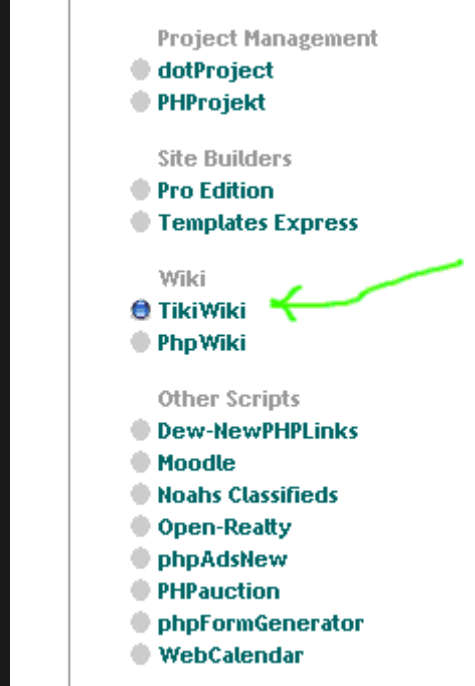
CGI Center Scripts Library Cron jobs Network Tools MIME Types

Apache Handlers HotLink Protection Index Manager IP Deny Manager Change Language

Statistics Software Configuration **Fantastico**

## INSTALL TIKI

Fantastico is a installer. You'll use it to install Tiki. Once fantastico comes up, click on Tiki Wiki CMS Groupware.



Then, select new installation. Notice for example that Tiki has been installed on karateforge.com. This same tool is used for future upgrades and remembers past installations.



**Short description:** TikiWiki is designed to be an international, clean and extensible Content Management System and Groupware that can be used to create all sorts of web applications, sites, portals, intranets and extranets. TikiWiki also works great as a web-based collaboration tool. TikiWiki has a lot of native options and sections that you can enable/disable as you need them.

**Homepage:** <http://www.tikiwiki.org/>

**TikiWiki support forum**

(We are not associated with the support forum)

**New Installation** (1.9.7)

Disk space required: 42.96 MB

Disk space available: 249770.5 MB




**Current installations:**

	<a href="#">Visit site</a> <a href="#">Remove</a>
<b>karateforge.com/</b> (1.9.7)	<a href="#">Visit site</a> <a href="#">Remove</a>
	<a href="#">Visit site</a> <a href="#">Remove</a>
	<a href="#">Visit site</a> <a href="#">Remove</a> <a href="#">Upgrade to 1.9.7</a>

Choose your domain to install. Then click install. Notice that the administrator login is set as admin with password admin.

## TikiWiki



**Install TikiWiki (1/3)**

**Installation location**

**Install on domain**

**Install in directory**

Leave empty to install in the root directory of the domain (access example: <http://domain/>).  
Enter only the directory name to install in a directory (for <http://domain/name/> enter **name** only). This directory SHOULD NOT exist, it will be automatically created!

**Admin access data**

Administrator-username   
(you need this to enter the protected admin area)

Password (you need this to enter the protected admin area)

You can change the admin login/password later in the administration area of your TikiWiki installation.

If all goes well, you'll see something similar to the following, and can click "finish".

## TikiWiki

**Install TikiWiki (2/3)**

The MySQL database and MySQL user  will be created and used for this installation.

- You chose to install in the main directory of the domain [how2why4.com.](http://how2why4.com/)
- The access URL will be: <http://how2why4.com/>.

Click on **Finish installation** to continue.

## CHANGE ADMIN PASSWORD

Immediately after fantastico installation, change the admin password before someone else does. Go to your site and login:

Login

user:

pass:

Use the admin login and admin password. The system will force you to change the password as follows.

**Change password enforced**

User:

Old password:

New password:

Again please:

**INSTALLATION COMPLETE**

Tiki is installed and you're set up as the administrator.

Alias

- Siteground Installation