

Ã<Â°Ã,Â Ã¬,Â¬Ã¬Â'Ã-

ŠÂ, Ã¬—...ÃªÂ·Â, Ã«Â ^Ã¬Â'Ã«“œÃ•~ÃªÂ, Â°

Ã<Â°Ã,ÂÃ«Â¼ Ã¬—...ÃªÂ·Â, Ã«Â ^Ã¬Â'Ã«“œÃ•~ÃªŠ” Ãª²fÃ¬œ Ã¬,ÂÃ¬Â¹~ Ã¬™ € Ã«ÂŠÂÃ¬šÂ° Ã¬œÂ Ã¬,Â¬Â-

•Â©Ã«^Ã«Â. Ã¬—...ÃªÂ·Â, Ã«Â ^Ã¬Â'Ã«“œÃ•Š” Ã¬Â¼Ã«Â°Â©Ã¬Â Ã¬ž'Ã¬—... Ã¬ž...Ã«^Ã«Â.

Ã«ÂÃ¬šÂ°ÃªÂ·Â, Ã«Â ^Ã¬Â'Ã«“œÃ•~ÃªŠ” Ã«Â°Â©Ã«Â²·Ã¬œ Ã¬—†Ã¬šÂµÃ«^Ã«Â, Ã«Â” Ã«Â°Â±Ã¬—...Ã¬, Ã«Â³ÂµÃ¬>Ã-

•Ã¬—Â¬Ã¬Â'Ã¬Â, Ã«Â²,Ã¬Â, Ã¬œÂ¼Ã«Â;œ Ã«~Ã«œÃ«Â;Â'Ã¬^~Ã«Š” Ã¬ž'Ã¬šÂµÃ«^Ã«Â. Ã«Â©”Ã¬Â'Ã¬Â €

Ã¬—...ÃªÂ·Â, Ã«Â ^Ã¬Â'Ã«“œÃ«Â¼Ã¼ Ã¬~Ã¬%Ã•~ÃªÂ, Â° Ã¬Â,Ã¬— (Ã¬^~Ã«Â¼Ã¼ Ã«“ÂÃ«Â©Â', 6.x Ã¬—Ã¬,œ 8.x

Ã¬œÂ¼Ã«Â;œ) Ã¬<ÂÃ¬Â œ Ã¬—...ÃªÂ·Â, Ã«Â ^Ã¬Â'Ã«“œÃ¬Â ^Ã¬Â°Â”Ã«Â¼Ã¼ Ã«Â°ÃªÂ, Â° Ã¬Â,Ã¬—

Ã«Â¹,Ã¬—...Ã«Â¬Â'Ã™ ~Ãª²Â¹½ Ã¬,Â¬Â¬Â'ÃŠÂ, Ã¬—Ã¬,œ Ã...œÃ¬šÂÃŠÂ, Ã¬—...ÃªÂ·Â, Ã«Â ^Ã¬Â'Ã«“œÃ«Â¼Ã¼ Ã¬^~Ã-

-%Ã•~Ã¬<ÂÃ¬<œÃ¬~Â.

**Ã¬—...ÃªÂ·Â, Ã«Â ^Ã¬Â'Ã«“œÃ«Â¼Ã¼ Â°Â'Ã¬•Â¼Ã«~Ã«Š”ÃªÂ°€?**

Ã«Â³Â'Ã¬•^ Ã¬Â·Â”Ã¬•Â½Ã¬,Â±Ã¬, Ã¬Â œÃªÂ±Â°Ã•~ÃªÂ, Â° Ã¬œ,Ã•~Ã¬—Â¬, Ã¬,Ã¬žÂ¬Ã«Â;Â'Ã«Â;Â¬Ã¬šÂÃ¬—Ã¬,œ

Ã«ÂŠ^Ã¬Â'Ã«, ^Ã«Â²,Ã¬Â, Ã¬—...ÃªÂ·Â, Ã«Â ^Ã¬Â'Ã«“œÃ«Â¼Ã¼ Ã•~ÃªŠ” Ãª²fÃ¬œ Ã•ÂÃ¬fÃ¬Â¶”Ã¬Â²œÃ«~ÃªŠ”

Ã«Â°”Ã¬ž...Ã«^Ã«Â (Ã¬^~Ã«Â¼Ã¼ Ã«“ÂÃ«Â©Â', 7.3 Ã¬—Ã¬,œ 7.4 Ã¬œÂ¼Ã«Â;œ). Ã«Â°Ã,ÂÃ¬~ Ã¬—Â'Ã«-Â

Ã«Â²,Ã¬Â,Ã«“ÂÃ¬œ Ã¬žÂÃªÂ, Â° Ã¬ÂŠ€Ã¬>Ãœ Ã¬œÂ¼Ã«Â;œ Ã«,~Ã¬—Â'Ã«~Ã«Â©Â°, Ã¬Â'ÃªŠ” ÃªÂ·Â, Â°Â'Ã«<Â¹

Ã«Â²,Ã¬Â,ÃªÂ³Â¼ ÃªÂ'€Ã«Â Â”Ã•~Ã¬—Â¬ ÃªÂ°œÃ«Â°œÃ¬žÃ«“ÂÃ¬Â' Ã™•Ã¬žÂÃ«œœÃªÂ, Â°ÃªÂ°, Ã«™Ã¬•^ Ã«Â³Â'Ã¬•^

œÃ”Ã¬Â¹~Ã«Â°Ã«Â²,ÃªÂ·Â, Ã¬^~Ã¬Â·Ã¬, Ã¬ÂŠ€Ã¬†Ã¬Â Ã¬œÂ¼Ã«Â;œ Ã¬ÂŠ,Ã¬%Ã•œÃ«<ÂÃªŠ” Ãª²fÃ¬, Ã¬~Ã«Â¬Â,Ã-

•Â©Ã«^Ã«Â. Ã«ÂŠ^Ã¬Â'Ã«, ^Ã«Â²,Ã¬Â, Ã¬—...ÃªÂ·Â, Ã«Â ^Ã¬Â'Ã«“œÃ«Š” Ã«Â¬Â,Ã¬Â œÃ«Â¼Ã¼ Ã¬Â¼Ã¬œÂ¼Ã¬,Â¬

ÃªÂ°€Ã«ŠÂÃ¬,Â±Ã¬Â'Ã«,Â®Ã¬šÂµÃ«^Ã«Â.

Ã«Â©”Ã¬Â'Ã¬Â € Ã¬—...ÃªÂ·Â, Ã«Â ^Ã¬Â'Ã«“œÃ«Š” Ã¬f^Ã«Â;œÃ¬šÂ° ÃªÂ, Â°Ã«ŠÂÃ¬, Ã¬†œÃªÂ°œÃ•Â©Ã«^Ã«Â, Ã-

•~Ã¬ÂŠ€Ã«ÂŠœ ÃªÂ, Â°Ã¬Â;Â'ÃªÂ, Â°Ã«ŠÂ, Ã...œÃ«ÂŠ^, Ã”œÃ«ŸÂ¬ÃªÂ·Â, Ã¬Â, Ã«Â°Ã«ÂªÂ”Ã«^Ã«“ÂÃ¬Â'Ã¬Â'Ã¬Â,Ã

Ã¬Â²~Ã«ŸÂ¼Ã¬ž'Ã«™Ã•~Ã¬ÂŠ€Ã¬•šÂ¬, Ã¬~Ã«, Ã¬ž'Ã¬šÂµÃ«^Ã«Â. Ã¬<œÃ¬—Ã¬—...ÃªÂ·Â, Ã«Â ^Ã¬Â'Ã«“œÃ«Â¼Ã¼ Ã-

•Â'Ã«Â³Â'Ã«Š” Ãª²fÃ¬, ÃªÂ°•Ã«Â ÂÃ¬Â'Ã¬Â¶”Ã¬Â²œÃ•Â©Ã«^Ã«Â.

ÃªÂ°œÃ¬š”: Ã¬—...ÃªÂ·Â, Ã«Â ^Ã¬Â'Ã«“œÃªÂ°€ Ã¬ž'Ã«™Ã•~ÃªŠ” Ã«Â²•

1.  $\tilde{A} \sim$ , „ $\tilde{A} \rightarrow \tilde{Z} \tilde{A} \rightarrow \tilde{A} \rightarrow$  „ $\tilde{A} \times \tilde{A} \rightarrow \tilde{A}^1 \sim \tilde{A} \rightarrow - \tilde{A} \rightarrow$  „ $\infty$   $\tilde{A} \in \tilde{A} \rightarrow \tilde{A}^1 \tilde{A}^2 \tilde{A}^3 \tilde{A}^4$   $\tilde{A} \ll \tilde{A}^\circ \tilde{A} \rightarrow \tilde{A} \tilde{A} \rightarrow$   
„ $\tilde{A}^\circ \tilde{A} \ll \tilde{A}^2 \tilde{A} \tilde{A} \rightarrow \tilde{A} \tilde{A} \rightarrow \tilde{S} \tilde{A} \times \tilde{A} \ll \tilde{A} \neq \tilde{A}^1 \tilde{A} \tilde{A} \ll \tilde{A}^\circ \tilde{A} \pm \tilde{A} \rightarrow - \dots$

2.  $\tilde{A} \rightarrow f^{\wedge} \tilde{A} \ll \tilde{A}^2$ , „ $\tilde{A} \rightarrow \tilde{A}$  „ $\tilde{A} \rightarrow$  „  $\tilde{A} \rightarrow$  „ $\tilde{A} \times \tilde{A} \rightarrow \tilde{A}^1 \sim$ ,  $\tilde{A}^2 \tilde{A}^\circ \in \tilde{A} \ll \tilde{S} \tilde{A} \neq \tilde{A} \cdot \tilde{A} \ll \tilde{A} \odot \tilde{A}' \tilde{A} \ll \tilde{A}^1 \wedge \tilde{A} \tilde{A}' \tilde{A} \ll$  „ $\tilde{A} \rightarrow - \tilde{A} \rightarrow$  „ $\infty$ .

3.  $\tilde{A} \ll \tilde{A}^\circ \tilde{A} \pm \tilde{A} \rightarrow - \dots \tilde{A} \rightarrow - \tilde{A} \rightarrow$  „ $\infty$   $\tilde{A} \ll \tilde{A} \xi \tilde{z} \tilde{A} \rightarrow \tilde{A} \eta \tilde{A} \times \tilde{A} \sim$  •  $\tilde{A} \in \tilde{A} \rightarrow \tilde{A}^1 \tilde{A} \ll \tilde{A} \times$  (css,  $\tilde{A} \rightarrow - \dots \tilde{A} \ll \tilde{A} ; \infty \tilde{A} \ll$  „ $\infty \tilde{A} \ll \infty \tilde{A}$ -  
 $\in \tilde{A} \rightarrow \tilde{A}^1 \tilde{A}^2 \tilde{A}^3 \tilde{A}^4 \tilde{A} \rightarrow \tilde{A}' \tilde{A} \ll \tilde{A}^- \tilde{A}$ ,  $\tilde{A} \rightarrow \tilde{A} \xi \in$ ,  $\tilde{A} \ll \tilde{A} \xi \tilde{z} \tilde{A} \rightarrow \tilde{A} \eta \tilde{A} \times \tilde{A} \sim$  •  $\tilde{A} \dots \in \tilde{A}$  „ $\in \tilde{A} \eta \tilde{A} ; \tilde{A} \ll \tilde{A} \times$ )  $\tilde{A} \rightarrow$  „  
 $\tilde{A} \ll \tilde{A}^3 \tilde{A} \mu \tilde{A} \rightarrow, \tilde{A} \rightarrow$ .

4.  $\tilde{A} \rightarrow$  „ $\tilde{A} \times \tilde{A} \rightarrow \tilde{A}^1 \sim \tilde{A}^2 \tilde{A}' \in \tilde{A} \ll \tilde{A} ; \tilde{A} \rightarrow \tilde{z} \tilde{A} \ll \tilde{A} \neq \tilde{A}^1 \tilde{A} \rightarrow \langle \tilde{A} \times \tilde{A} - \% \circ$  (tiki-install.php)  $\tilde{A} \cdot \tilde{A} \rightarrow - \tilde{A} \rightarrow \tilde{A} \ll \tilde{A}^\circ \tilde{A} \rightarrow \tilde{A}' \tilde{A} \rightarrow$   
„ $\tilde{A}^\circ \tilde{A} \ll \tilde{A}^2 \tilde{A} \tilde{A} \rightarrow \tilde{A}' \tilde{A} \rightarrow \tilde{S} \tilde{A} \times \tilde{A} \ll \tilde{A} \neq \tilde{A}^1 \tilde{A} \rightarrow - \dots \tilde{A}^2 \tilde{A} \cdot \tilde{A}$ ,  $\tilde{A} \ll \tilde{A}^{\wedge} \tilde{A} \rightarrow \tilde{A}' \tilde{A} \ll$  „ $\infty$

$\tilde{A} \rightarrow \tilde{A}$  „ $\tilde{A} \rightarrow \tilde{A}^2 \tilde{A}' \tilde{A} \ll \tilde{A} \neq \tilde{A}^1 \tilde{A} \tilde{A} \ll \tilde{A} \times \tilde{A} \rightarrow \tilde{S} \tilde{A}' \tilde{A} \ll \tilde{A} ; \infty \tilde{A} \ll$  „ $\infty \tilde{A} \cdot \tilde{A} \tilde{A}^3 \tilde{A} \tilde{A} \rightarrow - \dots \tilde{A} \ll \tilde{A} ; \infty \tilde{A} \ll$  „ $\infty \tilde{A} \ll \tilde{A} \neq \tilde{A}^1 \tilde{A} \tilde{A}^2 \tilde{A}^3 \tilde{A} \tilde{A} \cdot \tilde{A}' \tilde{A} \rightarrow \cdot \tilde{A}^1 \tilde{A} \ll \tilde{A} \xi \in \tilde{A} \rightarrow$   
•  $\tilde{A} \ll$ , „ $\tilde{A} \rightarrow \tilde{S}$ ” ? -  $\tilde{A} \rightarrow - \tilde{A}' \tilde{A} \ll - \tilde{A} \times \tilde{A} \rightarrow - \dots \tilde{A}^2 \tilde{A} \cdot \tilde{A}$ ,  $\tilde{A} \ll \tilde{A}^{\wedge} \tilde{A} \rightarrow \tilde{A}' \tilde{A} \ll$  „ $\infty \tilde{A} \ll \tilde{S}$ ” „ $\tilde{A} \in \tilde{A} \tilde{A} \rightarrow \tilde{A}^1 \sim \tilde{A} \ll \tilde{A}^2$ , „ $\tilde{A} \rightarrow \tilde{A}$  „”  $\tilde{A} \rightarrow \tilde{A}'$   
 $\tilde{A} \rightarrow \tilde{A} \in \tilde{A}^2 \tilde{A}^3 \tilde{A} \mu \tilde{A} \ll \tilde{A} \odot \tilde{A} \ll \tilde{A} \times \tilde{A} \ll \tilde{A} \xi \in$ ,  $\tilde{A} \rightarrow \tilde{A} \in \tilde{A} \rightarrow \tilde{A} \sim \tilde{A} \rightarrow \tilde{A} \in \tilde{A} \rightarrow \tilde{A}^1 \tilde{A} \ll \tilde{A} \xi \in \tilde{A} \rightarrow \tilde{A}' \tilde{A} \rightarrow \tilde{A} \sim \tilde{A} \rightarrow \tilde{A} \cdot \tilde{A} \ll \tilde{A} \rightarrow - \tilde{A} \rightarrow$  „  
 $\tilde{A}^2 \tilde{A}^1 \tilde{A}^2 \tilde{A} \rightarrow \tilde{S} \tilde{A}^\circ \tilde{A} \rightarrow - \tilde{A} \ll \tilde{A} \xi \in \tilde{A} \rightarrow \tilde{z} \dots \tilde{A} \ll \tilde{A} \times$ .

**FTP**  $\tilde{A} \rightarrow - \tilde{A} \ll \in \tilde{A} \cdot \infty \tilde{A} \ll \in \tilde{A} \rightarrow \cdot^{\wedge}$ :  $\tilde{A} \tilde{z} \tilde{A}$ ,  $\tilde{A} \times \tilde{A} \rightarrow \tilde{A} \xi \in \tilde{A} \rightarrow \tilde{A}$  „ $\tilde{A} \rightarrow \tilde{A}^2 \tilde{A}' \tilde{A} \ll \tilde{A} \neq \tilde{A}^1 \tilde{A} \tilde{A} \ll \tilde{A} \times \tilde{A} \rightarrow \tilde{S} \tilde{A}' \tilde{A} \ll \tilde{A} ; \infty \tilde{A} \ll$  „ $\infty \tilde{A} \cdot \tilde{A} \tilde{A}^3 \tilde{A} \tilde{A} \ll \tilde{A} \times \tilde{A} \rightarrow \infty$   
 $\tilde{A} \rightarrow - \dots \tilde{A} \ll \tilde{A} ; \infty \tilde{A} \ll$  „ $\infty \tilde{A} \cdot \tilde{A} \tilde{S}$ ”  $\tilde{A}^2 \tilde{A}^2 f \tilde{A} \ll \tilde{A}^3 \tilde{A}' \tilde{A} \ll \tilde{A} \times \tilde{A} \ll \tilde{S}$ ”, svn  $\tilde{A} \sim \tilde{A}^1 \tilde{A} \rightarrow \in wget \tilde{A}^2 \tilde{A}^3 \tilde{A}^4 \tilde{A}^2 \tilde{A}^\circ \tilde{A} \rightarrow \in \tilde{A} \ll \tilde{A}^2 \dots \tilde{A} \ll \tilde{A} \tilde{A}^1 \tilde{A} \rightarrow - \tilde{A}'$  ( $\tilde{A} \sim \tilde{A}$ ,  $\tilde{A} \rightarrow \tilde{S} \tilde{A} \times \tilde{A}$ -  
 $\in \dots \tilde{A} \rightarrow \tilde{A} \in \tilde{A}^2 \tilde{A}^3 \tilde{A} \mu \tilde{A} \rightarrow \tilde{z} \tilde{A} \rightarrow - \tilde{A}^2 \in \tilde{A} \ll \tilde{A} \rightarrow \tilde{A}$ ,  $\tilde{A} \rightarrow \tilde{A} \cdot \tilde{A} \rightarrow \tilde{A} \tilde{A} \rightarrow \in \tilde{A} \rightarrow \tilde{A} \times$ )  $\tilde{A} \ll \tilde{A} \neq \tilde{A}^1 \tilde{A} \tilde{A}$  „ $\tilde{A} \rightarrow, \tilde{A} \rightarrow \tilde{A} \rightarrow \tilde{S} \tilde{A} \odot \tilde{A} \cdot \tilde{A} \rightarrow - \tilde{A} \rightarrow \tilde{A} \in \tilde{A} \rightarrow \tilde{A} \gg \tilde{A} \ll$  „ $\tilde{A} \times \tilde{A} \rightarrow$  „  
SourceForge  $\tilde{A} \rightarrow - \tilde{A} \rightarrow$  „ $\infty \tilde{A} \rightarrow$  „ $\infty \tilde{A} \ll \tilde{A}^2$  „ $\tilde{A} \ll \tilde{A} ; \infty \tilde{A} \rightarrow \tilde{A} \xi \tilde{A} \rightarrow \tilde{A}' \tilde{A} \rightarrow \tilde{A}' \tilde{A} \ll$  „ $\tilde{A} \cdot \tilde{A} \rightarrow \tilde{A} \tilde{A} \rightarrow \in \tilde{A} \rightarrow \tilde{A} \times$ .

$\tilde{A} \rightarrow \tilde{A} \eta$  „ $\tilde{A}^2 \tilde{A}^\circ \in \tilde{A} \rightarrow f \tilde{A} \rightarrow$  „ $\tilde{A}$ ,  $\tilde{A} \rightarrow$  „ $\tilde{A} \times \tilde{A} \ll \tilde{A}^2 \dots \tilde{A} \rightarrow$  „ $\in$

• **1.1.**  $\tilde{A} \ll \tilde{A}^\circ \tilde{A}, \tilde{A} \times \tilde{A} \rightarrow \tilde{A} \sim \tilde{A} \sim$ , „ $\tilde{A} \rightarrow \tilde{z} \tilde{A} \rightarrow \tilde{A} \ll \tilde{A}^2$ , „ $\tilde{A} \rightarrow \tilde{A}$  „ $\tilde{A} \rightarrow$  „  $\tilde{A}^{\text{TM}}$  •  $\tilde{A} \rightarrow \tilde{A}$ ,

- 3.x  $\tilde{A} \rightarrow \hat{A}' \tilde{A} \gg, \tilde{A} \ll \hat{A}^2, \tilde{A} \rightarrow \hat{A}, \tilde{A} \rightarrow, \tilde{A} \rightarrow \langle \hat{A} \times \tilde{A} - \% \tilde{A} \cdot \tilde{A} \hat{A}^3 \hat{A} \tilde{A} \hat{A}^3, \tilde{A} \rightarrow \langle \hat{A} \tilde{A} \hat{A}^2 \hat{A}^{1/2} \tilde{A} \rightarrow \check{S} \hat{A}^\circ$
- 1.9  $\tilde{A} \sim \hat{A}^1 \tilde{A} \rightarrow \in 2.0 \tilde{A} \rightarrow, \tilde{A} \rightarrow \langle \hat{A} \times \tilde{A} - \% \tilde{A} \rightarrow \hat{A} \times \tilde{A} \rightarrow \hat{A}^{1/4} \tilde{A} \hat{A}^2 \hat{A}^{1/2} \tilde{A} \rightarrow \check{S} \hat{A}^\circ$
- 1.8.x  $\tilde{A} \ll \hat{A} \neq \hat{A}^{1/4} \tilde{A} \rightarrow \langle \hat{A} \times \tilde{A} - \% \tilde{A} \rightarrow \hat{A} \times \tilde{A} \rightarrow \hat{A}' \tilde{A} \ll \hat{A}^{1/4} \tilde{A} \ll \hat{A} \odot \hat{A}'$
- 1.7.x  $\tilde{A} \ll \hat{A} \neq \hat{A}^{1/4} \tilde{A} \rightarrow \langle \hat{A} \times \tilde{A} - \% \tilde{A} \rightarrow \hat{A} \times \tilde{A} \rightarrow \hat{A}' \tilde{A} \ll \hat{A}^{1/4} \tilde{A} \ll \hat{A} \odot \hat{A}'$
- 1.6.x  $\tilde{A} \sim \hat{A}^1 \tilde{A} \rightarrow \in \tilde{A} \rightarrow \hat{A}' \tilde{A} \rightarrow \hat{A}, \tilde{A} \ll \hat{A}^2, \tilde{A} \rightarrow \hat{A}, \tilde{A} \rightarrow, \tilde{A} \rightarrow \langle \hat{A} \times \tilde{A} - \% \tilde{A} \rightarrow \hat{A} \times \tilde{A} \rightarrow \hat{A}' \tilde{A} \ll \hat{A}^{1/4} \tilde{A} \ll \hat{A} \odot \hat{A}'$
- 1.2.  $\tilde{A} \rightarrow, \hat{A} \rightarrow \tilde{A} \rightarrow \check{S} \hat{A} \odot \tilde{A} \rightarrow \check{Z} \tilde{A} \rightarrow \hat{A} \xi \in \tilde{A} \rightarrow \hat{A} \cdot \tilde{A} \dots \in \tilde{A} \ll \hat{A} \xi \tilde{A} \rightarrow \tilde{A} \hat{A}' \in \tilde{A} \cdot \tilde{A} \rightarrow \tilde{A} \rightarrow \tilde{A} \rightarrow$
- 1.3.  $\tilde{A} \rightarrow \hat{A}' \tilde{A} \ll \hat{A} \times \tilde{A} \ll \hat{A}^2, \tilde{A} \rightarrow \hat{A}, \tilde{A} \rightarrow \in \hat{A}^{1/4} \tilde{A} \ll \hat{A}; \in \tilde{A} \rightarrow \dots \tilde{A} \hat{A} \cdot \hat{A}, \tilde{A} \ll \hat{A} \hat{A} \rightarrow \hat{A}' \tilde{A} \ll \in \tilde{A} \ll \hat{A} \neq \hat{A}^{1/4} \tilde{A} \cdot \hat{A} \tilde{A} \hat{A}^2 \tilde{A} \rightarrow \hat{A}, \tilde{A} \rightarrow \hat{A} \xi \in \tilde{A} \hat{A}^2 \hat{A}^\circ \tilde{A} \rightarrow \hat{A} \cdot$
- 1.4.  $\tilde{A} \rightarrow \dots \tilde{A} \hat{A} \cdot \hat{A}, \tilde{A} \ll \hat{A} \hat{A} \rightarrow \hat{A}' \tilde{A} \ll \in \tilde{A} \ll \hat{A} \neq \hat{A}^{1/4} \tilde{A} \rightarrow \hat{A} \tilde{A} \ll \hat{A}; \in \tilde{A} \rightarrow, \hat{A} \times \tilde{A} \rightarrow \hat{A}^1 \tilde{A} \rightarrow \hat{A} \mu \tilde{A} \cdot \tilde{A} \rightarrow \tilde{A} \rightarrow \tilde{A} \rightarrow \tilde{A} \rightarrow \hat{A}^1 \tilde{A} \rightarrow \in \tilde{A} \hat{A} \hat{A}^\circ \tilde{A} \rightarrow \hat{A}; \hat{A}' \tilde{A} \rightarrow, \hat{A} \times \tilde{A} \rightarrow \hat{A}^1 \tilde{A} \rightarrow \tilde{A} \ll \hat{A} \odot \tilde{A} \rightarrow \hat{A}' \tilde{A} \rightarrow \hat{A}^\circ \tilde{A} \hat{A} \hat{A}^\circ \tilde{A} \ll \hat{A} \neq \hat{A}^{1/4} \tilde{A} \rightarrow \hat{A} \mu \tilde{A} \cdot \tilde{A} \rightarrow \tilde{A} \rightarrow \tilde{A} \rightarrow ?$ 
  - $\tilde{A} \rightarrow \hat{A} \tilde{A} \ll \hat{A}; \in \tilde{A} \rightarrow, \hat{A} \times \tilde{A} \rightarrow \hat{A}^1 \tilde{A} \rightarrow \tilde{A} \rightarrow \hat{A} \parallel \tilde{A} \rightarrow \hat{A}^2 \in$
  - $\tilde{A} \hat{A} \hat{A}^\circ \tilde{A} \rightarrow \hat{A}; \hat{A}' \tilde{A} \ll \hat{A}^2, \tilde{A} \rightarrow \hat{A}, \tilde{A} \ll \hat{A} \odot \tilde{A} \rightarrow \hat{A}' \tilde{A} \rightarrow \hat{A}^\circ \tilde{A} \hat{A} \hat{A}^\circ \tilde{A} \ll \hat{A}; \in \tilde{A} \rightarrow, \hat{A} \times \tilde{A} \rightarrow \hat{A}^1 \tilde{A} \cdot \tilde{A} \hat{A} \hat{A}^\circ (\tilde{A} \ll \hat{A} \odot \tilde{A} \rightarrow \hat{A}' \tilde{A} \rightarrow \hat{A} \in \tilde{A} \rightarrow \dots \tilde{A} \ll \hat{A}^\circ \tilde{A} \rightarrow \hat{A}' \tilde{A} \check{S} \hat{A}, \tilde{A} \rightarrow \tilde{A} \ll \check{S} \tilde{A} \rightarrow \hat{A} \hat{A} \ll \in \tilde{A} \rightarrow \hat{A} \parallel \tilde{A} \rightarrow \hat{A}^2 \in \tilde{A} \ll \tilde{A} \rightarrow \hat{A} \xi \in \tilde{A} \rightarrow \cdot \check{S} \tilde{A} \rightarrow \in)$
- 1.5.  $\tilde{A} \ll \hat{A}^\circ \hat{A} \pm \tilde{A} \rightarrow \dots \tilde{A} \ll \hat{A} \xi \in \tilde{A} \ll \hat{A} \times \tilde{A} \hat{A} \hat{A}^\circ$
- 1.6.  $\tilde{A} \in \in \tilde{A} \rightarrow \hat{A}^{1/4} \tilde{A} \hat{A}^\circ \hat{A} \pm \tilde{A} \rightarrow \langle \hat{A} \tilde{A} \cdot \tilde{A} \hat{A} \hat{A}^\circ$ 
  - $\tilde{A} \rightarrow \hat{A} \tilde{A} \ll \hat{A}; \in \tilde{A} \rightarrow, \hat{A} \times \tilde{A} \rightarrow \hat{A}^1 \tilde{A} \rightarrow$
  - $\tilde{A} \hat{A} \hat{A}^\circ \tilde{A} \rightarrow \hat{A}; \hat{A}' \tilde{A} \rightarrow, \hat{A} \times \tilde{A} \rightarrow \hat{A}^1 \tilde{A} \rightarrow \tilde{A} \ll \hat{A} \odot \tilde{A} \rightarrow \hat{A}' \tilde{A} \rightarrow \hat{A}^\circ \tilde{A} \hat{A} \hat{A}^\circ$
  - SVN  $\tilde{A} \ll \hat{A} \neq \hat{A}^{1/4} \tilde{A} \rightarrow \hat{A} \mu \tilde{A} \cdot \in \tilde{A} \rightarrow \dots \tilde{A} \ll \hat{A}^\circ \tilde{A} \rightarrow \hat{A}' \tilde{A} \check{S} \hat{A},$
- 1.7.  $\tilde{A} \hat{A} \parallel \in \tilde{A} \cdot \in \tilde{A}^{\text{TM}} \cdot \tilde{A} \rightarrow \hat{A},$ 
  - 1.7.1.  $\tilde{A} \in \in \tilde{A} \rightarrow \hat{A}^{1/4} \tilde{A} \hat{A}^3 \hat{A}^{1/4} \tilde{A} \hat{A}' \tilde{A} \ll \tilde{A} \hat{A} \parallel \in \tilde{A} \cdot \in$
  - 1.7.2. SuPHP  $\tilde{A} \ll \hat{A} \rightarrow \hat{A}, \tilde{A} \rightarrow \hat{A} \in \tilde{A} \rightarrow \hat{A}$

- 1.7.3.  $\tilde{A}^{\alpha}\tilde{A}\upharpoonright\tilde{A}\cdot\omega\tilde{A}\ll\tilde{A}\S\tilde{A}\times\tilde{A}\tilde{S}\tilde{A},\tilde{A}\ll\tilde{A};\tilde{A}\tilde{A}\neg\tilde{S}\tilde{A}\times$
- 1.8.  $\tilde{A}\ll\tilde{A}^{\circ}\tilde{A}\neg\tilde{A}'\tilde{A},\tilde{A}^{\circ}\tilde{A}\ll\tilde{A}^2\tilde{A}\tilde{A}\neg\tilde{A}'\tilde{A}\neg\tilde{S}\tilde{A}\times\tilde{A}\ll\tilde{A}\S\tilde{A}^{1/4}\tilde{A}\neg\text{---}\dots\tilde{A}\ll\tilde{A}^{\circ}\tilde{A}\neg\tilde{A}'\tilde{A}\tilde{S}\tilde{A},\tilde{A}\cdot\sim\tilde{A}^{\alpha}\tilde{A},\tilde{A}^{\circ}\tilde{A}\neg\omega,\tilde{A}-$ 
  - $\sim\tilde{A}\neg\text{---}\tilde{A}\neg$  tiki-install.php
    - (A)  $\tilde{A}\neg f^{\wedge}\tilde{A}\ll\tilde{A};\omega\tilde{A}\neg,\tilde{A}\times\tilde{A}\neg\tilde{A}^{1\sim}$
    - (B)  $\tilde{A}^{\alpha}\tilde{A},\tilde{A}^{\circ}\tilde{A}\neg\tilde{A};\tilde{A}'\tilde{A}\ll,\tilde{A}'\tilde{A}\neg\text{---}\tilde{A}\tilde{A}\ll\tilde{A}\textcircled{R}\tilde{A}\neg\text{---}\tilde{A}'\tilde{A}\neg,\omega\tilde{A}\neg,\tilde{A}\times\tilde{A}\neg\tilde{A}^{1\sim}$
    - $\tilde{A}\neg\text{---}\dots\tilde{A}^{\alpha}\tilde{A}\cdot\tilde{A},\tilde{A}\ll\tilde{A}\wedge\tilde{A}\neg\tilde{A}'\tilde{A}\ll\text{"}\omega\tilde{A}\ll^{\text{TM}}\tilde{A}\neg\cdot^{\wedge}\tilde{A}\ll\tilde{A}^3\tilde{A}'\tilde{A}\neg\cdot^{\wedge}\tilde{A}\neg\text{---}\tilde{A}\ll\tilde{A}\in\tilde{A}\cdot\omega\tilde{A}\neg,\tilde{A}\tilde{A}f$
    - $\tilde{A}\neg,\tilde{A}\times\tilde{A}\neg\tilde{A}^{1\sim}\tilde{A}\text{"},\tilde{A}\ll\tilde{A};\omega\tilde{A}^{\alpha}\tilde{A}\cdot\tilde{A},\tilde{A}\ll\tilde{A}'\tilde{A}\neg\tilde{A}'\tilde{A}\neg\langle\tilde{A}\times\tilde{A}\tilde{A}\tilde{A}\tilde{A}\tilde{A}\cdot\tilde{A}\tilde{A}^{\alpha}\tilde{A}^2\tilde{A}^{1/2}\tilde{A}\neg\tilde{S}\tilde{A}^{\circ}\dots$
    - $\tilde{A}\neg\tilde{A},\tilde{A}\neg\tilde{A}^{1/2}\text{"}\tilde{A}\ll\text{"}\tilde{A}\textcircled{C}\tilde{A}\ll\tilde{A}\neg\tilde{A},\tilde{A}\neg\tilde{A}\omega\tilde{A}\ll\tilde{A}\S\tilde{A}^{1/4}\tilde{A}\neg\sim\tilde{A}\neg\tilde{A}\cdot\tilde{A}\cdot\tilde{A}'\tilde{A}\neg\cdot\tilde{A}^{1/4}\tilde{A}\cdot\tilde{A}\tilde{A}^{\alpha}\tilde{A}^2\tilde{A}^{1/2}\tilde{A}\neg\tilde{S}\tilde{A}^{\circ}$
    - $\tilde{A}\ll\tilde{A}\in\tilde{A}\neg\cdot^{\wedge}:\tilde{A}\neg\%_{\omega}\sim\tilde{A}\neg,\tilde{A}\upharpoonright\tilde{A}\mu\tilde{A}\cdot\sim\tilde{A}\neg\text{---}\tilde{A}\neg\tilde{A}\ll\tilde{A}^{\circ}\tilde{A}\neg\tilde{A}'\tilde{A},\tilde{A}^{\circ}\tilde{A}\ll\tilde{A}^2\tilde{A}\tilde{A}\neg\tilde{A}'\tilde{A}\neg\tilde{S}\tilde{A}\times$   
 $\tilde{A}\neg\text{---}\dots\tilde{A}^{\alpha}\tilde{A}\cdot\tilde{A},\tilde{A}\ll\tilde{A}\wedge\tilde{A}\neg\tilde{A}'\tilde{A}\ll\text{"}\omega\tilde{A}\cdot\sim\tilde{A}^{\alpha}\tilde{A},\tilde{A}^{\circ}$
  - 1.8.1.  $\tilde{A}\neg\text{---}\dots\tilde{A}^{\alpha}\tilde{A}\cdot\tilde{A},\tilde{A}\ll\tilde{A}\wedge\tilde{A}\neg\tilde{A}'\tilde{A}\ll\text{"}\omega\tilde{A}^{\alpha}\tilde{A}^2\in\tilde{A}\upharpoonright\tilde{A}$
- 1.9. tiki-install.php  $\tilde{A}\neg\tilde{A}'\tilde{A}\rangle,$
- 1.10. .htaccess  $\tilde{A}\tilde{A}\tilde{A}\tilde{A}\neg\tilde{A}^{1/4}\tilde{A}^{\alpha}\tilde{A}^{\circ}\tilde{A}\pm\tilde{A}\neg\langle\tilde{A}$
- 1.11.  $\tilde{A}\dots\tilde{A}\tilde{A}\neg\tilde{S}\tilde{A}\times\tilde{A}\tilde{S}\tilde{A},$ 
  - $\tilde{A}\ll\tilde{A}\neg\tilde{A},\tilde{A}\neg\tilde{A}\omega\tilde{A}\ll\tilde{A};\omega\tilde{A}\neg,\omega\tilde{A}\neg\sim^{\wedge}\tilde{A}\neg f\tilde{A}\cdot\tilde{A}'\tilde{A}\neg\cdot\tilde{A}^{1/4}\tilde{A}\cdot\tilde{A}\tilde{A}^{\alpha}\tilde{A}^2 f\tilde{A}\ll\text{"}\tilde{A}\times$
  - $\tilde{A}\neg\tilde{A}'\tilde{A}\ll\text{"}\text{"}\tilde{A}\ll\tilde{A}\S\tilde{A}^{1/4}\tilde{A}\neg\tilde{A}^{\circ}\tilde{A}^{3/4}\tilde{A}\neg\cdot,\tilde{A}\ll\tilde{A}'\tilde{A}\neg\cdot\tilde{A}^{1/4}\tilde{A}\cdot\tilde{A}\tilde{A}^{\alpha}\tilde{A}^{1\tilde{A}}\tilde{A}?$
  - $\tilde{A}\neg\tilde{A}'\tilde{A}\neg\tilde{A}\omega\tilde{A}\ll\tilde{A}\sim\tilde{A}\cdot\tilde{A}'\tilde{A}\neg\cdot\tilde{A}^{1/4}\tilde{A}\cdot\sim\tilde{A}\neg\tilde{A}\S\in?$
  - 1.11.1.  $\tilde{A}\neg\tilde{A}\gg\tilde{A}\tilde{A}\dots\tilde{A}\tilde{S}\tilde{A},\tilde{A}^{\text{TM}}\cdot\tilde{A}\neg\tilde{A},$
  - 1.11.2.  $\tilde{A}\neg\tilde{A}'\tilde{A}\neg\tilde{A},\tilde{A}\neg\text{---}\tilde{A}\neg,\tilde{A}\neg\tilde{A}\neg\tilde{S}\tilde{A}\textcircled{C}\tilde{A}\neg\tilde{A}\ll\sim\tilde{A}^{\alpha}\tilde{A},\tilde{A}^{\circ}\tilde{A}\ll\tilde{S}\tilde{A}\S\tilde{A}\ll\text{"}\tilde{A}\times\tilde{A}\neg\tilde{A}'\tilde{A}\neg\cdot,\tilde{A}\neg\tilde{A}\S$   
 $\tilde{A}\neg\tilde{A}^{1/4}\omega\tilde{A}\neg\tilde{A}\tilde{A},\tilde{A}\neg\tilde{A}\tilde{A}\ll\tilde{S}\text{"}\tilde{A}\neg\tilde{A}\S\in\tilde{A}^{\text{TM}}\cdot\tilde{A}\neg\tilde{A},\tilde{A}\cdot\sim\tilde{A}\neg\langle\tilde{A}\tilde{A}\neg\langle\omega\tilde{A}\neg\sim\tilde{A}\times.$
  - 1.11.3.  $\tilde{A}\neg\tilde{A}\tilde{A}\neg\tilde{A}\neg\tilde{A}\tilde{A}\tilde{A}\neg\omega\tilde{A}^{1/4}\tilde{A}\ll\tilde{A};\omega\tilde{A}\neg\cdot^{\wedge}\tilde{A}\neg\tilde{A},\tilde{A}\cdot\sim\tilde{A}\neg\tilde{A}\S\in\tilde{A}\neg\cdot\tilde{S}\tilde{A}\neg\in\tilde{A}-$   
 $\text{"}\tilde{A}\ll\tilde{A}\neg\tilde{A}^{\alpha}\tilde{A}\cdot\tilde{A},\tilde{A}\neg\tilde{A},\tilde{A}\sim\tilde{A},\tilde{A}\neg\tilde{A}\upharpoonright\omega\tilde{A}\neg,\tilde{A}\neg\sim\tilde{A}\neg\tilde{A}\cdot\tilde{A}\cdot\sim\tilde{A}^{\alpha}\tilde{A}^3\tilde{A}\tilde{A}^{\alpha}\tilde{A}\cdot\tilde{A},\tilde{A}\ll\text{"}\tilde{A}\times\tilde{A}\neg,\tilde{A}\neg\tilde{S}\tilde{A}^{1\tilde{A}}\tilde{A}\neg\tilde{A},\tilde{A}-$

~Â¹Ã¬€ ÃªÂ±Â°Ã¬Â ^ Ã•~Ã¬<ÂÃ¬<œÃ¬~Â¸.

- 1.12. Ã...œÃ«Â§^ Ã¬—...ÃªÂ·Â,Ã«Â ^Ã¬Â´Ã«“œ
- Ã¬Â¶”ÃªÂ°€ Ã«„Ã¬>€Ã¬Â´ Ã•„Ã¬š”Ã•~Ã¬<ÂÃ«<^ÃªÂ¹œ?
- ÃªÂ³Â ÃªÂ, % Ã¬,Â¬Ã¬šÂ©Ã¬žÃ«“Â¸Ã¬„ Ã¬œ„Ã•œ Ã«Â©”Ã«ÂªÂ”
  - Ã¬<Â¬Ã«Â§Ã¬
  - Ã«Â©€Ã«Â°Ã«Â°Ã,Â¸
  - SVN Ã¬„, Â†ÂµÃ•œ Ã¬—...Ã«Â°Ã¬Â´ÃšÂ,
  - Ã«Â°Ã,Â¸ Ã¬>ÃªÂ²Â© Ã¬Â,Ã¬šÂ¸Ã„,Â´Ã¬šÂ¸ ÃªÂ´€Ã«Â!Â¬Ã¬ž (Tiki Remote Instance manager, TRIM)
  - Ã¬^~Ã«™ Ã¬—...ÃªÂ·Â,Ã«Â ^Ã¬Â´Ã«“œ
  - Ã¬,Â¬Ã¬šÂ©Ã«~Ã¬Â§€ Ã¬•šÃ«š” Ã...œÃ¬Â´Ã«Â, ” Ã¬,ÂÃ¬Â œ
  - Ã«Â²„Ã¬Â „Ã¬„ Ã«Â³€ÃªÂ²Â½Ã•~ÃªÂ,Â° Ã¬œ„Ã•œ Ã¬%~ Ã«Âª...Ã«Â¹Ã¬-Â´

### 1.1. Ã«Â°Ã,Â¸Ã¬~ Ã~„Ã¬žÂ¬ Ã«Â²„Ã¬Â „Ã¬„ Ã™•Ã¬Â,

`tiki-admin.php?page=general` Ã¬„ Ã«Â°Â©Ã«Â¬Â,Ã•~Ã¬—Â¬ Ã™•Ã¬Â, ÃªÂ°€Ã«šÂ¸Ã•Â©Ã«<^Ã«<Â¸

### 3.X Ã¬Â´ Ã>„ Ã«Â²„Ã¬Â „Ã¬„ Ã¬<Â¸Ã-%Ã•~ÃªÂ³Â ÃªÂ³„Ã¬<Â ÃªÂ²Â½Ã¬šÂ°

Ã¬Â§Ã¬Â´ Ã¬—...ÃªÂ·Â,Ã«Â ^Ã¬Â´Ã«“œÃªÂ°€ ÃªÂ°€Ã«šÂ¸Ã•Â©Ã«<^Ã«<Â¸. Ã«Â°Ã,Â¸ 4.x/5.x/6.x/7.x/8.x/9.x/10.x/11.x/12.x  
 Ã«š” ÃªÂ°ÃªÂ° Ã•Â´Ã«<Â¹ Ã«Â²„Ã¬Â „Ã¬œÂ¼Ã«Â;œÃ¬~ Ã«Â°Ã¬Â´Ã„Â°Ã«Â²Â Ã¬Â´Ã¬šÂ¸ Ã«Â§^Ã¬Â´ÃªÂ·Â,Ã«Â ^Ã¬Â´Ã¬...~  
 Ã¬šÂ¸Ãª¬Ã«Â!Â½ÃšÂ,Ã«Â¸Â¼ Ãª¬Â´Ã•Â´Ã•~ÃªÂ³Â Ã¬ž^Ã¬šÂµÃ«<^Ã«<Â¸. Ã~„Ã¬žÂ¬ Ã¬<Â¸Ã-% Ã¬Â¸´Ã¬Â, Ã«Â²„Ã¬Â „Ã¬—  
 Ã«œ€Ã•~Ã¬—Â¬ Ã¬„,Â¸Ã¬Â¹ Ã¬šÂ¸Ãª¬Ã«Â!Â½ÃšÂ,Ã«Â¸Â¼ Ã¬^~Ã¬ž´Ã¬—...Ã¬œÂ¼Ã«Â;œ Ã¬žÂ¬Ã¬<Â¸Ã-%Ã•~ÃªÂ³Â  
 Ã¬~^Ã¬fÃ•~Ã¬Â§€ Ã«ÂªÂ»Ã¬^Ã«~ Ã¬~Â¸Ã«Â¸~ÃªÂ°€ Ã«Â°œÃ¬fÃ•~Ã«š” Ã¬Â§€ Ã¬Â£Â¼Ã¬œÃ•~Ã¬œÃ«š” ÃªÂ²fÃ¬„  
 ÃªÂ³Â Ã«Â Â¸Ã•Â´ Ã«Â³Â´Ã¬<ÂÃ¬<œÃ¬~Â¸.







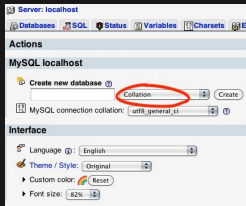






utf8 collation  
utf8  
utf8

- **utf8 collation**



tiki-install.php  
Operations

utf8

utf8

("Ã«Â§ŒÃ¬•Â½ Ã¬†ŒÃ¬ŒÂªÂ°€ Ã¬ƒ^Ã«Â;œÃ¬ŒÂ´ Âª²ƒÃ¬Â´Ã«Â©Â´ Ã«Â®Ã¬-Â´Ã¬-Â´Â°ÂªÂ,Â°"Ã«Â;œ FTP)

ÃŒŒÃ¬-Â¼Ã«"ÂªÃ¬,, Ã«Â®Ã¬-Â´Ã¬-Â´Â°ÂªÂ,Â° Ã¬-Â´,,Ã¬-,, Ã«Â§ŒÃ¬-Â´ÂªÃ™" Ã«~Ã¬-Â§€ Ã¬•ŒÂªÂ³Â, Ã¬ŒÂªÃƒ€Ã¬-Â¼ Ã¬ŒÂ¹Ã¬-,,Â±Ã¬~ Ã¬...œÃ"ŒÃ«Â;Â;Ã¬,, Ã¬-Â´ œÃªÂ±Â°Ã• Ã¬-Â´Ã¬-œÃ¬~Âª. (templates/styles/\*, Ã«Â° Ã¬Â¹Ã¬-œÃ• Ã«,, Ã«Â¼Ã«,, Ã¬ž^Ã«ÂªÃ«Â©Â´ templates/yoursite/\* Ã¬~ Ã«,,Â´Ã¬-ŒÂ©Ã«Â¬-Â¼Ã«"Âª). Ã¬-Â´Ã¬-Â´,, Ã«Â²,,Ã¬-Â´,,Ã¬-€ Ã¬-Â´...Ã¬-Â´... Ã¬ŒÂªÃ¬-ƒ€Ã¬-Â¼ Ã«Â¹ Ã¬~Ã¬-Â´•Ã«,,Â´Ã¬-ŒÃ¬,, Ã«-Â´•Ã¬-Â´•ÃªÂ³Â Ã¬ž^Ã¬-ŒÂµÃ«^Ã«Âª. Ã¬-Â´Ã«ŸÃ¬-Â´œÃŒŒÃ¬-Â¼Ã«"ÂªÃ¬-€ Ã¬œÃ¬-Â´œ€ Ã«Â°Â°Ã¬-ŒŒÃ¬-Œ,,œÃ«Œ" Ã¬-Â´ œÃªÂ±Â°Ã«~Ã¬-^Ã¬-œÂ¼Ã«Â©Â°, Ã¬-Â´Ã«Œ" Ã¬~ÂªÃ«ž~Ã«œÃ¬-ŒŒÃ¬-Â¼Ã«"ÂªÃ¬,, ÃªÂ´Â´,Ã«Œ€Ã«Â;œ Ã«,,Â´~Âª²Â´Ã«~Ã«Â©Â° Ã¬-Â´ŸÃ¬-ƒÃ«œ Ã¬-Â´Ã«"ÂªÃ¬~ Ã¬žÂ´Ã¬-Â´Ã¬,, Ã¬-Â´Ã¬-ŒÂ©Ã¬-•Ã¬-Â§€ Ã«ÂªÂ»Ã•~Ãª²Œ Ã«Â©Ã«^Ã«Âª.

## SVN Ã«Â´Â¼ Ã†ÂªÂª•Œ Ã¬-...Ã«Â°Ã¬-Â´ŒŒ,

SVN Ã¬,, Ã¬-Â´Ã¬-ŒŒÂ©Ã•Ã¬-Œ-Ã¬-Ã¬,,ÂªÃ¬-Â´~Ã«Â´Â¼ Ã•~Ã«Œ" Âª²Â½Ã¬-Œ°, you can easily update via SVN Ã¬,, Ã†ÂªÂª•~Ã¬-Œ-Ã¬-Ã¬-%Â½Âª²Œ Âª²Â°Â±Ã¬-Â´Ã¬,, Ã•Â´ Ã¬~ Ã¬ž^Ã¬-ŒÂµÃ«^Ã«Âª-> [Get Code](#)

## 1.7. ÃªÂªŒŒ•Œ Ã™•Ã¬-Â´,

### 1.7.1. ÃŒŒÃ¬-Â¼ÂªÂ³Â¼ Ã«Â´Ã«" ÃªÂªŒŒ•Œ

ÃªÂ´.€Ã•Ã¬~ Ã¬,,œÃ«Â²,,ÃªÂ°€ Ã«Â°Ã,Âª ÃŒŒÃ¬-Â¼ÂªÂ³Â¼ Ã«Â´Ã«" ÃªÂªŒŒ•œÃ¬- Ã«Œ€Ã•~Ã¬-Œ-Ã¬-Ã«Âª^Ã°Ã¬,, Ã¬~ÃªÂ³Â Ã¬ž^Ã«ÂªÃ«Â©Â´ (Ã¬,,œÃ«Â²,, ÃªÂµÃ¬-Ã¬,,Â±Ã¬-Ã¬~Ã¬-Â´;Â´Ã•Â©Ã«^Ã«Âª), Ã¬~ÂªÃ«Â´~ Ã«Â©"Ã¬-œÃ¬-Â§€ Ã¬-Â´Ã¬-€ Ã«Â¹,,Ã¬-Â´Ã¬-ž^Ã«Œ" Ãž~Ã¬-Â´Ã¬-Â§€Ã«Â´Â¼ Ã«Â³Â¼ Ã¬~ Ã¬ž^Ã¬,, Ãª²ƒÃ¬-ž...Ã«^Ã«Âª. Ã¬-Â´Ã«ŸÃ¬-Â´œÃ¬-Â´œÃ¬-ŒŒŒÃ¬-Â´œÃ¬œÃ«,,Ã«Œ" Ã¬-Â´Ã¼Ã«Â°~Ã¬-Â´Ã¬-œÂ¼Ã«Â;œ Ã¬~ÂªÃ«Â´~ Ã«Â;œÃªÂ´.Â´,Ã¬-Ã¬-ž^Ã¬-ŒÂµÃ«^Ã«Âª (Ã¬,,ÂªÃ¬-Â´•Ã¬-Ã«"Â°Ã«Â¼ Ã«ÂªÃ«Â´ÂªÂ´Âª,Â° Ã«•ŒÃ«-Â´,Ã¬-Ã¬-Â´~Ãª²ŒÃ¬-œ,,Ã¬-Â´~Ã«Â´Â¼ Ã«Â¬-Â´,Ã¬~Ã•~Ã¬-Â´Ã¬-œÃ¬~Âª)

### Ã«,,^Ã«Â¬-Â´ Ã¬-Â´Ã¬-€ ÃªÂªŒŒ•œ

Ã«Â©"Ã¬-œÃ¬-Â§€ÃªÂ°€ ŒŒÂ¹Ã¬-Â´•Ã«"Ã«Â´%Ã†Â´ Ã«Â;Â¬-ÂªÂ°€ Ã¬-Â´Â°ÂªÂ,Â° Ã«Âª^ÃªÂ°€Ã«ŒŒÃ¬-Â´Ã«Â¼Ã«Œ" Âª²ƒÃ¬-,, Ã¬-Â´ŒŒÃ¬-Â´•Ã•~Ã«Œ" Âª²ƒÃ¬-,, Ã«,~Ãƒ€Ã«,Â´Ã«Â©Â´, Ã¬-Â´ŒŒÃ¬-Â´•Ã«œÃ«"Ã«Â´%Ã,,Â°Ã«Â;Â¬-Ã«"ÂªÃ¬~ ÃªÂªŒŒ•œÃ¬-,, Ã«Â³€Ãª²Â½Â´.Â´Ã¬-Â´Ã¼ Ã•Â©Ã«^Ã«Âª. Ã«Â°Ã,ÂªÃ«Œ" Ã«ÂªÂ´Ã«"Â´Ã•,,Ã¬-Œ" Ã«"Ã«Â´%Ã,,Â°Ã«Â;Â¬-Ã¬-Ã¬-Â´Ã¼Âª,Â°(Ã¬™€ Ã¬-Â´ÂªÂ,Â°)Âª²Â°€ Ãª²Â°€Ã«ŒŒÃ•œÃ¬-Â´ŒŒÃ™•Ã¬-Â´,Ã•~Ã«Œ" Ã¬-œÃ«,,Ã«Â´Â¼ Ã•Â´ Âª²ƒÃ¬-ž...Ã«^Ã«Âª. Ã¬-Â´Ã¬~ÂªÃ«Â´~ Ã«Â©"Ã¬-œÃ¬-Â§€Ã«Œ" Ã«Â¬-Â´,Ã¬-Â´ œÃ«Â´Â¼ Ã¬-Â´Ã«-Â´»Âª²Œ Ã«Â´Âª²Â°Ã-

• ~Ä«Š" Ä-ÄŒ€Ä-Ä-Ä«€Ä•œ Ä-Ä,,ÄxÄ«Äª...Ä-Ä,, ÄÄ-Ä•Ä"Ä•Ä ÄªÄ²fÄ-ž...Ä«Ä«Äx.

**Ä«,, ^Ä«Ä-Ä' Ä«ÄŒžÄ-€ ÄªÄ¶Ä¶Ä•œ**

Internal Server Error 500, Ä«Ä¹,,Ä-Ä'Ä-ž^Ä«Š" Äž~Ä-Ä'Ä-ÄŒ€ Ä~Ä¹Ä-€ Ä-œÄ Ä-Ä-Ä•œ ÄªÄ²fÄ«Äx Ä«Ä³Ä'ÄªÄ²Ä  
Ä«œÄ«ÄxÄ«Ä©Ä', ÄÄÄÄÄ-Ä¼Ä«ÄxÄ-Ä-Ä«€Ä•œ ÄªÄ¶Ä¶Ä•œÄ-Ä' ÄªÄ•€Ä~Ä-Ä-Ä¹Ä~Ä, Ä-ŠÄxÄŠÄ, Ä-Ä-Ä«€Ä-  
•Ä-Ä-Ä-Ä Ä-Ä Ä-Ä ^Ä•~Ä-ÄŒ€ Ä-•ŠÄ-Ä,, Ä-Ä~Ä«,, Ä-ž^Ä-ŠÄµÄ«Ä^Ä«Äx.

ÄªÄ¶Ä¶Ä•œÄ-Ä' Ä~,,Ä-žÄ-Ä "777" Ä-œÄ¼Ä«Äjœ Ä-Ä,,ÄxÄ-Ä •Ä«œ ÄªÄ²Ä½Ä-šÄ°, FTP ÄÄ'Ä«Ä¼Ä-Ä'Ä-Ä, ÄŠÄ, Ä«ÄŸÄ¼  
Ä-Ä,Ä-Ä-šÄ©Ä~Ä-Ä-Ä ÄÄÄÄÄ-Ä¼Ä«ÄxÄ-Ä,, "755" Ä«Äjœ Ä«Ä³ÄªÄ²Ä½Ä•~Ä-ÄÄ-œÄ-Äx. Ä«Ä°Ä,ÄxÄªÄ°Ä€ Ä«"Ä«Ä %œÄ-  
,,Ä°Ä«Ä!Ä-Ä Ä«,Ä'Ä«Ä¶Ä€Ä-Ä-Ä,,ÄxÄ-Ä¹~Ä«~Ä-Ä'Ä-ž^Ä-Ä,, ÄªÄ²Ä½Ä-šÄ°, Ä«Ä°Ä,Äx ÄÄÄÄÄ-Ä¼Ä«ÄxÄ-Ä,, ÄÄ-Ä•Ä"Ä•œ Ä-  
Ä'Ä«Ä-Ä~ ÄªÄ¶Ä¶Ä•œ Ä-Ä-ÄÄ-œ Ä«Ä³ÄªÄ²Ä½Ä•œÄ«ÄxÄ«Š" ÄªÄ²fÄ-Ä, Ä™•Ä-Ä,Ä~Ä-ÄÄ-œÄ-Äx.

Ä-Ä%œÄ~ Ä-Ä'ÄªÄ•Ä¼ÄªÄ¶Ä¶Ä•œÄ-Ä' Ä-ž^Ä-Ä,, ÄªÄ²Ä½Ä-šÄ°, Ä«ÄxÄ-ÄÄÄ-Ä,, Ä-ÄxÄ-%œÄ•Ä Ä-Ä~ Ä-ž^Ä-ŠÄµÄ«Ä^Ä«Äx:

---

sh setup.sh

ÄªÄ•Ä, Ä«Ä!Ä-ÄªÄ³Ä Ä-ÄŒ^Ä«Ä-Ä, Ä-Ä-Ä«ÄµÄ-Ä,, Ä•Ä-ÄÄÄ-œÄ-Äx. Ä-Ä'Ä«Ä-Äx Ä«ÄµÄ-Ä,, Ä•Ä'Ä-Ä•Ä¼Ä•Ä Ä-ÄŒ€  
Ä«ÄªÄ"Ä«ÄŸÄ'Ä«Š" ÄªÄ²Ä½Ä-šÄ°Ä-Ä«Š", ÄªÄ•Ä, Ä«fÄŸ "Ä™•Ä-Ä," (enter) Ä«ÄŸÄ¼ ÄÄ'Ä«Ä!ÄÄ~Ä-Ä..."Ä-Ä,,œ  
ÄªÄ,Ä°Ä«Ä³Ä, ÄªÄ°Ä'Ä-Ä,, Ä-œÄ Ä-ÄŒ€Ä•~Ä-ÄÄÄ-œÄ-Äx.

"sh setup.sh" Ä-Ä' Ä-Ä œÄ«€Ä«Äjœ Ä-ž^Ä«™Ä•~Ä-ÄŒ€ Ä-•ŠÄ-Ä~Ä-Ä,, ÄªÄ²Ä½Ä-šÄ°, ÄªÄ•€Ä~Ä-Ä~ ./tiki/ Ä«"Ä«Ä %œÄ-  
,,Ä°Ä«Ä!Ä-Ä-Ä-Ä,,œ Ä«ÄxÄ-ÄÄÄ-Ä,, Ä-œÄÄ«,,Ä•Ä' Ä«Ä³Ä¼ Ä-Ä~ Ä-ž^Ä-ŠÄµÄ«Ä^Ä«Äx

---

chmod -R 777 ./db ./dump ./img/wiki ./img/wiki\_up ./img/trackers ./modules/cache ./temp ./temp/cache ./templates\_c  
./templates ./styles ./whelp/

777 **777** **644**  
 find [YOURDIR] -type d -exec chmod 777 {} \; find [YOURDIR] -type f -exec chmod 644 {} \;

```
find [YOURDIR] -type d -exec chmod 777 {} \; find [YOURDIR] -type f -exec chmod 644 {} \;
```

**tiki-install.php**  
**500 Internal Server Error**  
**403 Forbidden Error**

## 1.7.2. SUPHP

**500 Internal Server Error**  
**403 Forbidden Error**

## 1.7.3.

x/execute/subdir entry  
**500 Internal Server Error**  
**403 Forbidden Error**



---

# SuPHP $\tilde{A} \neg \neg \dagger \tilde{A} \neg \mathbb{E}$

$\tilde{A} \mathbb{E} \mathbb{E} \tilde{A} \neg \hat{A}^{1/4} \tilde{A} \ll " \hat{A} \alpha / ' \tilde{A} \cdot \sim \tilde{A} \neg \alpha e,, \tilde{A} \ll "" \tilde{A} \ll \hat{A} \% \circ \tilde{A} -$   
 $„ \hat{A} \circ \tilde{A} \ll \hat{A} | \hat{A} \neg \tilde{A} \ll " \hat{A} \alpha$

600 - 666 / 700 - 777

604 - 666 / 705 - 777

660 - 666 / 770 - 777

660 - 666 / 770 - 777

---



# SupHP $\mathbb{A} \rightarrow \mathbb{Z}^{\wedge} \mathbb{A} \rightarrow \mathbb{C}$

$\mathbb{A} \in \mathbb{C} \mathbb{A} \rightarrow \hat{\mathbb{A}}^{1/4} \mathbb{A} \ll " \hat{\mathbb{A}} \times / ' \mathbb{A} \bullet \sim \mathbb{A} \rightarrow \mathbb{C}, \mathbb{A} \ll " " " \mathbb{A} \ll \hat{\mathbb{A}} \% \mathbb{O} \mathbb{A} -$

$„ \hat{\mathbb{A}}^{\circ} \mathbb{A} \ll \hat{\mathbb{A}} | \hat{\mathbb{A}} \rightarrow \mathbb{A} \ll " \hat{\mathbb{A}} \times$

?

600 - 644 / 701 - 755

?

?

$\mathbb{A} \ll " " \mathbb{A} \ll \hat{\mathbb{A}} \% \mathbb{O} \mathbb{A}, \hat{\mathbb{A}}^{\circ} \mathbb{A} \ll \hat{\mathbb{A}} | \hat{\mathbb{A}} \rightarrow \mathbb{A} \sim \hat{\mathbb{A}}^1 \mathbb{A} \rightarrow \mathbb{C} \mathbb{A} \in \mathbb{C} \mathbb{A} \rightarrow \hat{\mathbb{A}}^{1/4} \mathbb{A} \mathfrak{A} \hat{\mathbb{A}} \mathbb{C} \mathbb{E} \mathbb{A} \bullet \mathbb{C} \mathbb{E} \mathbb{A} \ll \hat{\mathbb{A}} \rightarrow \hat{\mathbb{A}}, \mathbb{A} \rightarrow \hat{\mathbb{A}} \mathbb{C} \mathbb{E} \mathbb{A} \rightarrow \hat{\mathbb{A}} \mathbb{A} \ll " \hat{\mathbb{A}} \times \mathbb{A} \rightarrow „, \mathbb{A} \ll \hat{\mathbb{A}} \mathfrak{A} \hat{\mathbb{A}} \mathbb{A} \ll ' \mathbb{A} \rightarrow \hat{\sim} \mathbb{A} \rightarrow \hat{\mathbb{A}} \bullet \mathbb{A} \bullet \mathbb{C} \mathbb{E} \mathbb{A} \gg,,$   
 $\mathbb{A} \mathfrak{A} \hat{\mathbb{A}}^3 „, \mathbb{A} \rightarrow \dagger \mathbb{A} \bullet \sim \mathbb{A} \ll \hat{\mathbb{A}} \hat{\mathbb{A}} \times \mathbb{A} \ll \hat{\mathbb{A}} \odot \hat{\mathbb{A}} ' \text{ tiki-install.php } \mathbb{A} \ll \hat{\mathbb{A}} | \mathbb{C} \mathbb{E} \mathbb{A} \hat{\mathbb{A}}^{\circ} \mathbb{E} \mathbb{A} \rightarrow \langle \hat{\mathbb{A}} \mathbb{A} \rightarrow \langle \mathbb{C} \mathbb{E} \mathbb{A} \rightarrow \sim \hat{\mathbb{A}} \times.$



Ä-Ä£Ä¼Ä¬: Ä·Ä¬Ä§€Ä«Ä§£, 5.1 Ä¬Ä' Ä», Ä«Ä²,Ä¬Ä,, (5.3, 5.0, ...)Ä¬œÄ¼Ä«Ä;œÄ¬ Ä¬...ÄªÄ·Ä, Ä¬Ä' Ä«œÄ¬  
Ä«£€Ä·Ä¬Ä¬, Ä¬Ä°ÄªÄ²Ä° Ä¬,ÄªÄ¬Ä·Ä¬, Ä¬žÄ¬ Ä¬,ÄªÄ¬Ä·Ä·Ä·Ä«S" ÄªÄ²fÄ¬, ÄªÄ¶£Ä¬žÄªÄ·Ä'  
Ä«œÄ«Ä|Ä¼Ä««Ä«Äª, Ä«™ Ä¬œÄ¬Ä¬ "utf-8 Ä¬Ä°ÄªÄ²Ä° ÄªÄ°Ä¬š" Ä¬,Ä ÄfÄ¬,Ä¬Ä·ÄÄ¬, Ä¬Ä²Ä'ÄÄ¬Ä·ÄªÄ³Ä Ä¬  
™"Ä«Ä©Ä'Ä¬fÄ¬Ä¬,ÄªÄ«Äª...Ä¬, Ä«ÄªÄ«ÄªÄ'Ä¬ÄÄ¬œÄ¬Äª.

Ä¬,ÄªÄ¬Ä¹~Ä",Ä«Ä;œÄªÄ·Ä,Ä«žÄ"Ä¬Ä' Ä¬Ä'Ä¬Ä,Ä¬Ä¬ Ä¬žÄ ÄªÄ, Ä¬fÄfœÄªÄ°€ Ä«Ä¬Ä¬Ä'Ä¬žÄ"Ä«S" ÄªÄ²Ä¼Ä¬šÄ°  
(Ä¬žÄ ÄªÄ, Ä¬fÄfœÄªÄ°€ Ä«Ä¬Ä¬Ä'Ä¬žÄ"Ä«S" ÄªÄ²fÄ¬Ä' Ä«Ä§žÄ¬šÄµÄ««Ä«Äª), db/lock Ä¬, Ä¬,ÄÄ¬Ä œÄ-  
·Ä"Ä¬œÄ¼Ä«Ä;œÄ¬Ä¬ Ä¬žÄ ÄªÄ, Ä·Ä'Ä¬Ä§€Ä«ÄªÄ¼ Ä·Ä'Ä¬Ä¼ Ä·Ä©Ä««Ä«Äª

Ä¬Ä¬...ÄªÄ·Ä,Ä«Ä Ä¬Ä'Ä"£ Ä«™ Ä¬· Ä¬Ä³Ä'Ä¬· Ä¬Ä¬ Ä«£€Ä·£ Ä¬,Ä Äf

Ä¬Ä¬...ÄªÄ·Ä,Ä«Ä Ä¬Ä'Ä"œ/Ä¬,ÄªÄ¬Ä¹~ Ä«™ Ä¬· Ä«ÄªÄ¬Ä£ÄªÄ³Ä¼ ÄªÄ°™ Ä¬€ 2ÄªÄ°œÄ¬Ä¬ Ä¬Äª'Ä¬š"Ä·œ  
Ä«Ä³Ä'Ä¬·ÄªÄª'€Ä«Ä Ä" Ä¬,Ä ÄfÄ¬Ä' Ä¬žÄ"Ä¬šÄµÄ««Ä«Äª:

Ä«Ä³Ä'Ä¬· Ä«Ä;£ÄªÄ·Ä,Ä¬Ä,

Ä¬,ÄªÄ¬Ä¹~ Ä¬œÄ¬Ä¼Ä«Ä° Ä¬,ÄªÄ¬Ä·Ä¬, ÄªÄµÄ¬Ä¬,Ä±Ä·Ä Ä«·£, "Ä«Ä³Ä'Ä¬· (https) Ä«Ä;œÄªÄ·Ä,Ä¬Ä,Ä¬,  
Ä¬š"ÄªÄµÄ¬" Ä«Ä¼Ä«S" Ä¬,Ä ÄfÄ¬,Ä¬Ä·ÄÄ¬Ä' Ä¬žÄ"Ä¬šÄµÄ««Ä«Äª. Ä«Ä,£Ä«Ä¼Ä¬šÄ°Ä¬Ä €Ä¬™€ Ä¬,Ä¬Ä¬Ä'ÄšÄ,  
Ä¬,œÄ«Ä², ÄªÄ°, Ä¬Ä,Ä¬Ä¬Ä¬Ä'Ä¬~Ä«S" Ä«Ä°Ä¬Ä'Ä,Ä°ÄªÄ°€ private Ä·ÄªÄ²£ Ä¬œÄ Ä¬Ä§€Ä«Ä"Ä«Ä,Ä«Ä; Ä¬Ä' Ä¬,Ä ÄfÄ¬,Ä¬Ä-  
·ÄÄ¬, Ä¬,Ä ÄfÄ·Ä"Ä«S" ÄªÄ²fÄ¬, ÄªÄ¶£Ä¬žÄªÄ·Ä©Ä««Ä«Äª.

Ä«Ä³Ä'Ä¬· Ä«Ä;œÄªÄ·Ä,Ä¬Ä,Ä¬, Ä¬Ä Ä¬šÄ©Ä·ÄªÄ,Ä° Ä¬œ,Ä·Ä¬Ä¬Ä¬, Ä¬Ä' Ä¬,Ä ÄfÄ¬,Ä¬Ä·ÄÄ¬, Ä¬,Ä ÄfÄ·Ä"Ä«S"  
ÄªÄ²fÄ¬Ä¬Ä¶"ÄªÄ°€Ä¬Ä Ä¬œÄ¼Ä«Ä;œ, ÄªÄ·€Ä·Ä¬~ Ä«,Ä«Ä©"Ä¬Ä,Ä¬Ä¬ Ä«£€Ä·Ä¬Ä¬ Ä«Ä³Ä'Ä¬· Ä¬Ä,Ä¬Ä|ÄªÄ³Ä¼  
Ä¬Ä,Ä¬šÄ© IP Ä¬Ä£Ä¼Ä¬Ä£ÄªÄ°€ Ä·Ä,Ä¬š"Ä·Ä©Ä««Ä«Äª. Ä¬Ä'Ä«S" ÄªÄ·€Ä·Ä¬~ Ä¬Ä¹Ä¹~Ä,Ä¬šÄªÄ£... Ä-  
š£Ä¬,Ä¬Ä¬Ä¬Ä¬,œÄ Ä¬Ä·Ä"Ä«Ä"Ä·ÄªÄ±Ä°Ä«,~ ÄªÄµÄ¬ÄÄ«Ä§ÄªÄªÄ°€ ÄªÄ°€Ä«šÄªÄ·Ä"Ä«Ä©Ä°, Ä«Ä³Ä'Ä¬· Ä¬Ä,Ä¬Ä|Ä¬~  
ÄªÄ²Ä¼Ä¬šÄ°, Ä¬Ä"Ä«œÄ££Ä«Ä°Ä¬Ä¬Ä¬,œÄ Ä¬Ä·Ä"Ä«Ä" Ä«Ä° ÄªÄµÄ¬ÄÄ«Ä§ÄªÄªÄ°€ ÄªÄ°€Ä«šÄªÄ·Ä©Ä««Ä«Äª.

Ä¬,ÄªÄ¬Ä¹~ Ä",Ä«Ä;£ÄªÄ·Ä,Ä«žÄ" Ä¬žÄ ÄªÄ·Ä,ÄªÄ,Ä°

Ä¬,ÄªÄ¬Ä¹~ Ä",Ä«Ä;œÄªÄ·Ä,Ä«žÄ"Ä¬~ Ä«Ä§Ä¬Ä§€Ä«Ä§% Ä«Ä"ÄªÄ³,Ä«Ä;œÄ¬Ä", Ä¬,ÄªÄ¬Ä¹~ Ä",Ä«Ä;œÄªÄ·Ä,Ä«žÄ"Ä¬Ä'  
ÄªÄ·€Ä·Ä¬~ Ä«Ä°Ä,ÄªÄ¬Ä¬Ä¬Ä§,Ä¬ž...Ä·Ä"Ä«S" Ä«Ä²,ÄšÄ¼Ä¬, ÄÄ'Ä«Ä|ÄÄ·Ä"Ä«Ä©Ä' Ä¬žÄ ÄªÄ,Ä°ÄªÄ²£ Ä«Ä©Ä««Ä«Äª.  
Ä¬,ÄªÄ¬Ä¹~ Ä¬~ Ä«Ä§Ä¬Ä§€Ä«Ä§% Ä«Ä"ÄªÄ³,Ä¬Ä¬Ä¬,œÄ Ä¬,ÄªÄ¬Ä¹~ Ä",Ä«Ä;œÄªÄ·Ä,Ä«žÄ"Ä¬~ Ä¬žÄ ÄªÄ, Ä·Ä"Ä¬Ä§€  
Ä¬·šÄ«S" Ä¬,Ä ÄfÄ¬,Ä¬Ä·ÄÄ¬Ä' Ä¬žÄ"Ä¬šÄµÄ««Ä«Äª. Ä¬ÄªÄ¬Ä¬Ä¬...Ä«Ä¬Ä'Ä¬šÄ© Ä¬,Ä¬Ä¬Ä'ÄšÄ,Ä¬Ä¬Ä¬,œÄ«S"



## Set the Database Connection



Tiki requires an active database connection. You must create the database and user *before* completing this page.

1 Tiki found an existing database connection in your local.php file.

[Use Existing Connection](#)

or

[Modify database connection](#)

Use this page to create a new database connection, or use the [manual installation process](#).

### Database information

Enter your database connection information.

Database type:

MySQL Improved (mysqli)

Host name:

localhost

Enter the host name or IP for your database.

Database name:

Enter the name of the database that Tiki will use.

### Database user

Enter a database user with administrator permission for the Database.

User name:

Password:

### Character set

Highly recommended for new installations. However, if you are upgrading or migrating a previous tiki database, you are recommended to uncheck this box

Always force connection to use UTF-8

[More information](#)

[Continue](#)

• [Use Existing Connection](#) or [Modify database connection](#)

•  Always force connection to use UTF-8

Character set

Character set

Highly recommended for new installations. However, if you are upgrading or migrating a previous tiki database, you are recommended to uncheck this box

Always force connection to use UTF-8

[More information](#)

Character set

Highly recommended for new installations. However, if you are upgrading or migrating a previous tiki database, you are recommended to uncheck this box

**Convert database and tables to UTF-8**

1.8.1.2. Convert database and tables to UTF-8

Highly recommended for new installations. However, if you are upgrading or migrating a previous tiki database, you are recommended to uncheck this box

## Install & Upgrade

This install will populate (or upgrade) the database.

If you want to upgrade from a previous Tiki release, ensure that you have read and understood the [Upgrade instructions](#).

### Encoding Issue

Your database encoding is **not** in UTF-8.

Current encoding is *latin1*. The languages that will be available for content on the site will be limited. If you plan on using languages not covered by the character set, you should re-create or alter the database so the default encoding is *utf8*.


[More information](#)

### Experimental Conversion

Use at your own risk. If the data in the database currently contains improperly converted data, this may make matters worse. Suitable for new installations. Requires ALTER privilege on the database.

[Convert database and tables to UTF-8](#)

### Install

 **Warning:** This will destroy your current database.

[Reinstall the database](#)

### Upgrade

Automatically upgrade your existing database to v6.0 beta1.

[Upgrade](#)

•  $\tilde{A}^{\text{TM}} \cdot \tilde{A} \ll \in \tilde{A} \cdot \tilde{A} \ll \hat{A} \hat{A} \tilde{A} \ll \hat{A} \odot \hat{A}' \tilde{A} - \hat{A}' \tilde{A} \ll \hat{A}! \hat{A}$

•  $\tilde{A} \rightarrow \hat{A}' \tilde{A} \rightarrow \hat{A} \in \text{"Convert database and tables to UTF-8"} (\tilde{A} \ll \hat{A}^{\circ} \tilde{A} \rightarrow \hat{A}' \tilde{A} - \hat{A}^{\circ} \tilde{A} \ll \hat{A}^2 \hat{A} \tilde{A} \rightarrow \hat{A}' \tilde{A} \rightarrow \hat{S} \hat{A} \mu \tilde{A} \rightarrow \text{TM} \in \tilde{A} \dots \in \tilde{A} \rightarrow \hat{A}' \tilde{A} \ll \hat{A} \text{"} \tilde{A} \rightarrow \text{,, UTF-8} \tilde{A} \rightarrow \in \hat{A}^{1/4} \tilde{A} \ll \hat{A}! \in \tilde{A} \ll \hat{A}^3 \in \tilde{A}^{\text{TM}} \sim) \tilde{A} \ll \hat{A}^2 \text{,,} \tilde{A} - \hat{S} \hat{A}^{1/4} \tilde{A} \rightarrow \text{,,} \tilde{A} \hat{A}' \tilde{A} \ll \hat{A}! \tilde{A} \hat{A} \cdot \hat{A} \tilde{A} \rightarrow \hat{\sim} \tilde{A} \rightarrow \hat{Z} \hat{\sim} \tilde{A} \rightarrow \hat{S} \hat{A} \mu \tilde{A} \ll \hat{\sim} \tilde{A} \ll \hat{A} \mu$

•  $\tilde{A} \rightarrow \text{,,} \hat{A} \pm \tilde{A}^{\circ} \hat{A}^3 \hat{A} \mu \tilde{A} \rightarrow \hat{A} \tilde{A} \rightarrow \in \hat{A}^{1/4} \tilde{A} \ll \hat{A}! \in \tilde{A} \rightarrow \hat{A} \mu \tilde{A} - \% \tilde{A} \rightarrow \hat{A}' \tilde{A} \ll \tilde{A}^{\circ} \hat{A}^3 \hat{A} \tilde{A} \ll \tilde{A} \ll \hat{A} \odot \hat{A}' \text{,,} \tilde{A} \rightarrow \hat{A}' \tilde{A} \rightarrow \text{,,} \hat{A} \tilde{A} - f \tilde{A} \rightarrow \text{,,} \hat{A} \rightarrow \tilde{A} \cdot \hat{A} \tilde{A} \rightarrow \hat{A}' \tilde{A} \ll \text{"} \tilde{A} \rightarrow \hat{A}' \tilde{A} \rightarrow f \tilde{A} \ll \hat{A}^3 \hat{A}' \tilde{A} \rightarrow \hat{A}' \tilde{A} \rightarrow \hat{A} \S \in \tilde{A} \rightarrow \cdot \hat{S} \tilde{A}^{\circ} \hat{A}^2 \in \tilde{A} \ll \hat{A} \odot \tilde{A} \ll \hat{\sim} \tilde{A} \ll \hat{A} \mu \text{,,} \tilde{A} -$

•  $\tilde{A} \rightarrow \hat{A} \S \in \tilde{A} \ll \hat{A} \S \in \tilde{A} \rightarrow \hat{A}^{1/4} \tilde{A} \ll \hat{A}^{\circ} \tilde{A} \rightarrow \hat{A} \tilde{A} \rightarrow \hat{A} \mu \text{,,} \tilde{A} \ll \hat{A} \rightarrow \hat{A} \text{,,} \tilde{A} \rightarrow \hat{A}! \% \tilde{A} \ll \hat{A}^{\circ} \tilde{A} \rightarrow \hat{A}' \tilde{A} -$

$\text{,,} \hat{A}^{\circ} \tilde{A} \ll \hat{A}^2 \hat{A} \tilde{A} \rightarrow \hat{A}' \tilde{A} \rightarrow \hat{S} \hat{A} \mu \tilde{A} \ll \hat{A} \mu \hat{A}^{1/4} \tilde{A} \rightarrow \hat{Z} \hat{A} \rightarrow \tilde{A} \rightarrow \text{,,} \hat{A} \mu \tilde{A} \rightarrow \hat{A}^1 \tilde{A} \ll \hat{A} \mu \hat{A}^{1/4} \tilde{A} \rightarrow \hat{A} \cdot \tilde{A} \ll \hat{S} \text{"} \tilde{A} \rightarrow \hat{A} \S \in \tilde{A} \sim \hat{A}^1 \tilde{A} \rightarrow \in \tilde{A} \rightarrow f \hat{\sim} \tilde{A} \ll \hat{A}^{\circ} \tilde{A} \text{,,} \hat{A} \mu \tilde{A} \ll \hat{A}^2 \text{,,} \tilde{A} \rightarrow \hat{A} \text{,,} \tilde{A} \rightarrow \in \hat{A}^{1/4} \tilde{A} \ll \hat{A}! \in \text{"Automatically upgrade your existing database to"}$

(ÃªÃ¸, Ã¸Ã¸Ã¸;Ã¸' Ã¸«Ã¸°Ã¸Ã¸'Ã¸,,Ã¸°Ã¸«Ã¸²Ã¸ Ã¸Ã¸'Ã¸Ã¸Ã¸«Ã¸¥Ã¸¼ Ã¸Ã¸¸Ã¸«™  
Ã¸Ã¸—...Ã¸ªÃ¸·Ã¸,Ã¸«Ã¸ ^Ã¸Ã¸'Ã¸«“œ) Ã¸·Ã¸ Ã¸Ã¸Ã¸€ Ã¸Ã¸—Ã¸Ã¸«Ã¸¶€Ã¸«Ã¸¥Ã¸¼ Ã¸«Ã¸Ã¸»Ã¸ªÃ¸²œ  
Ã¸«Ã¸©Ã¸«^Ã¸«Ã¸¸. Ã¸Ã¸—...Ã¸ªÃ¸·Ã¸,Ã¸«Ã¸ ^Ã¸Ã¸'Ã¸«“œ Ã¸Ã¸Ã¸'Ã¸Ã¸'Ã¸«Ã¸`€Ã¸«Ã¸;œ, Ã¸,,Ã¸Ã¸¸Ã¸«Ã¸¥Ã¸¼  
Ã¸Ã¸,,Ã¸ Ã¸fÃ¸·~Ã¸Ã¸<Ã¸Ã¸Ã¸œÃ¸Ã¸~Ã¸¸.

### Install & Upgrade

This install will populate (or upgrade) the database.

If you want to upgrade from a previous Tiki release, ensure that you have read and understood the [Upgrade instructions](#).

Install

**Warning:** This will destroy your current database.

[Reinstall the database](#)

Upgrade

Automatically upgrade your existing database to v6.0 beta1.

[Upgrade](#)

Ã¸™·Ã¸«œ€Ã¸·~Ã¸«Ã¸ Ã¸¸Ã¸«Ã¸©Ã¸'Ã¸-  
Ã¸'Ã¸«Ã¸!Ã¸

(Ã¸Ã¸€Ã¸¼Ã¸Ã¸~: Ã¸Ã¸,, Ã¸«Ã¸`Ã¸ªÃ¸³,,Ã¸«Ã¸” db Ã¸«Ã¸°Ã¸Ã¸'Ã¸,,Ã¸° Ã¸Ã¸·Ã¸«Ã¸ Ã¸Ã¸Ã¸,, utf-8 Ã¸«Ã¸;œ Ã¸«Ã¸³€Ã¸™~Ã¸·Ã¸©Ã¸«^Ã¸«Ã¸¸,  
Ã¸ªÃ¸·Ã¸,Ã¸«Ã¸!Ã¸¼Ã¸ªÃ¸³Ã¸ Ã¸ªÃ¸·€Ã¸·~Ã¸Ã¸~ db Ã¸...œÃ¸Ã¸'Ã¸«Ã¸, Ã¸«~Ã¸·œ utf-8 Ã¸«Ã¸Ã¸'Ã¸Ã¸¸¸,,Ã¸,Ã¸¸Ã¸,Ã¸«Ã¸¥Ã¸¼ Ã¸Ã¸,Ã¸Ã¸Ã¸¸Ã¸©Ã¸·~Ã¸«,,Ã¸«Ã¸;  
Ã¸«Ã¸³€Ã¸™~Ã¸·Ã¸©Ã¸«^Ã¸«Ã¸¸.)

### 1.8.1.3. Ã¸Ã¸»Ã¸"Ã¸...Ã¸Ã¸,Ã¸ Ã¸«Ã¸¥Ã¸¼ Ã¸ªÃ¸,Ã¸°Ã¸Ã¸;Ã¸'Ã¸Ã¸~ Ã¸Ã¸,Ã¸Ã¸½"Ã¸«"Ã¸©Ã¸Ã¸—Ã¸Ã¸,,œ UTF-8 Ã¸«Ã¸;œ Ã¸«Ã¸³€Ã¸™~

Ã¸Ã¸µœÃ¸Ã¸ç...Ã¸Ã¸ Ã¸Ã¸œÃ¸¼Ã¸«Ã¸;œ Ã¸ªÃ¸,Ã¸°Ã¸Ã¸;Ã¸'Ã¸Ã¸~ Ã¸«Ã¸°Ã¸Ã¸'Ã¸,,Ã¸° Ã¸«Ã¸²Ã¸ Ã¸Ã¸'Ã¸Ã¸Ã¸¸Ã¸—Ã¸Ã¸,,œÃ¸Ã¸~ Ã¸Ã¸»Ã¸"Ã¸-  
...Ã¸Ã¸,Ã¸ Ã¸«Ã¸¥Ã¸¼ (Ã¸Ã¸œ,,Ã¸,Ã¸¸ Ã¸¸~Ã¸Ã¸'Ã¸Ã¸¸€Ã¸Ã¸~ Ã¸«,,Ã¸'Ã¸¸Ã¸©Ã¸«Ã¸Ã¸¼, Ã¸«"Ã¸±Ã¸«"Ã¸±, Ã¸·Ã¸Ã¸¸€Ã¸«Ã¸¸œ Ã¸œœÃ¸Ã¸¼ Ã¸«Ã¸°  
Ã¸ªÃ¸·Ã¸,Ã¸«Ã¸!Ã¸¼ Ã¸ªÃ¸°Ã¸¸Ã¸«Ã¸Ã¸Ã¸'Ã¸Ã¸Ã¸,Ã¸'Ã¸Ã¸~ Ã¸ªÃ¸·Ã¸,Ã¸«Ã¸!Ã¸¼ Ã¸Ã¸²Ã¸"Ã¸«Ã¸¶€Ã¸œœÃ¸Ã¸¼Ã¸Ã¸— Ã¸«œ€Ã¸·œ Ã¸ªÃ¸²Ã¸½Ã¸«Ã¸;œ  
Ã¸«"Ã¸±Ã¸«"Ã¸±Ã¸ªÃ¸³Ã¸¼ Ã¸ªÃ¸°™Ã¸Ã¸€ Ã¸Ã¸,,Ã¸ Ã¸~Ã¸,Ã¸Ã¸,,Ã¸¸Ã¸Ã¸·Ã¸·Ã¸«,, Ã¸Ã¸Ã¸·Ã¸") utf-8Ã¸«Ã¸;œ Ã¸«Ã¸³€Ã¸™~Ã¸·Ã¸'Ã¸Ã¸·Ã¸¼ Ã¸·Ã¸©Ã¸«^Ã¸«Ã¸¸

- Ã¸Ã¸¸,,Ã¸-‰o Ã¸«Ã¸°Ã¸©Ã¸«Ã¸²·Ã¸Ã¸€ "Upgrading and running into encoding issues?"  
(Ã¸Ã¸—...Ã¸ªÃ¸·Ã¸,Ã¸«Ã¸ ^Ã¸Ã¸'Ã¸«“œ Ã¸Ã¸Ã¸'Ã¸Ã¸,Ã¸Ã¸½"Ã¸«"Ã¸© Ã¸«Ã¸Ã¸,Ã¸Ã¸ œÃ¸Ã¸— Ã¸Ã¸¸¸Ã¸«Ã¸©Ã¸'?)









~«,~'~¬—~Ä~¬,, ~¬ž~Ä¬~Ä†~Äµ~Ä•~Ä©~Ä•~Äª~Ä,~Ä° ~¬œ,,~Ä•~Ä¬—~Ä¬ ~¬•~Ä½~Äª~Ä°,~Ä¬~Ä¬¬œ~Äª~Ä°,  
~Ä•~Ä ~Ä«~Ä¹~Ä¬,, ~Äª~Ä³,,~Äš~Ä•~Ä¬¬~Ä~Ä¬¬œ~Ä¬~Ä¸.

- MySQL ~¬,,œ~Ä«~Ä²,,~Ä«~Ä¥~Ä¼ 4~Ä¬—~Ä¬,,œ 5~Ä«~Ä;œ ~Ä¬—...~Äª~Ä•~Ä,~Ä«~Ä ^~Ä¬~Ä'~Ä«"œ~Ä•œ  
~Äª~Ä²~Ä½~Ä¬š~Ä°, ~Ä¬~Ä²~Ä¬œ ~Ä«~Ä;œ~Äª~Ä•~Ä,~Ä¬~Ä,~Ä¬,, ~Ä•~Äª~Ä²œ ~Ä«~Ä©~Ä', "Account disabled"  
(~Äª~Ä³,,~Ä¬~Ä• ~Ä«~Ä¹,,~Ä™ œ~Ä¬,,~Ä±~Ä™ "~Ä«~Ä") ~Ä¬~Ä¸~Ä«~Ä¥~Ä¼ ~Ä¬~Ä»~Äª~Ä²œ ~Ä«~Ä ~Ä¬^~Ä«,,  
~Ä¬ž^~Ä¬š~Äµ~Ä«^~Ä«~Ä¸. ~Ä¬~Ä'~Ä«~Ä¥~Ä¼ ~Ä¬^~Ä¬~Ä•~Ä•~Ä«~Ä ~Ä¸~Ä©~Ä':

---

```
mysql -u user_dbuser -p user_dbname -B -e "update users_users set waiting=NULL where waiting is not NULL and valid is NULL;"
```

~Ä¬~Ä'~Ä«"~Ä«~Ä¥~Ä¼ ~Ä¬~Ä°~Ä¾~Ä¬•,,~Ä«~Ä'~Ä¬•~Ä¼ ~Ä•~Ä ~Äª~Ä¹œ?

~Ä¬~Ä°~Ä¾~Ä¬•,,~Ä«~Ä'~Ä¬•~Ä¼~Ä•~Ä ~Äª~Ä•~Ä, ~Ä¬~Ä'~Ä«~Ä ~Ä•œ ~Äš~Ä¹~Ä¬~Ä•~Ä¬~Ä ~Ä¬~Ä, ~Äª~Ä²f~Ä¬— ~Ä«œ~Ä•~Ä¬—~Ä¬ ~Äª~Ä•œ~Ä•~Ä¬~Ä  
~Ä«~Ä²,,~Ä¬~Ä,,~Ä¬~Ä¬œ~Ä¬¬œ ~Ä«~Ä©"~Ä«~Äª~Ä" (release notes) ~Ä¬™œ ~Äª~Ä°~Äª~Ä°~Ä¬~Ä¬f^ ~Ä¬~Ä¬œ~Ä¬¬œ~Ä¬~Ä¬,,~Ä¸~Ä«~Äª...~Ä¬,,œ ~Ä-  
ž~Ä¬~Ä'~Ä¬~Äšœ ( ~Ä¬~Ä. Tiki2, Tiki3, Tiki4, Tiki5, Tiki6 ...) ~Ä«~Ä¥~Ä¼ ~Ä¬,~Ä'~Äž~Ä' ~Ä«~Ä³~Ä'~Ä¬~Ä~Ä¬¬œ~Ä¬~Ä¸

- Tiki 7 ~Ä¬~Ä¬œ~Ä¬¬œ ~Ä«...~Ä,~Äš~Ä,

~Ä¬~Ä'~Ä¬~Ä œ ~Ä«~Ä~Ä•~Ä'~Ä¬•~Ä¼ ~Ä•~Ä¬~Äšœ?

- ~Ä«,,~Ä¬¬œ~Ä¬~Ä' ~Ä•,,~Ä¬š"~Ä•~Ä¬¬~Ä ~Äª~Ä²~Ä½~Ä¬š~Ä°, ~Ä¬~Ä°~Ä,~Ä¸ Irc ~Ä¬~Ä±,,~Äœ... ~Ä«~Ä£~Ä, ~Ä-  
~Ä¹~Ä¬œ~Äª~Ä²œ~Ä¬¬œ~Äœ ~Ä¬,, ~Ä«~Ä°~Ä©~Ä«~Ä¬~Ä,~Ä•~Ä¬¬~Ä~Ä¬¬œ~Ä¬~Ä¸
- ~Ä«~Ä²,,~Äª~Ä•~Ä,~Äª~Ä°œ ~Ä«~Ä°œ~Äª~Ä²~Ä¬~Ä•~Ä¬¬~Ä ~Äª~Ä²~Ä½~Ä¬š~Ä°, <http://dev.tiki.org> ~Ä¬—~Ä¬,,œ

Ã¬•ŒÃ«Â Â¸Ã¬ÂŒÂ¼Ã¬<Ã¬<œÃ¬~Â¸ (Ã¬^~Ã¬Â • ÃªÂ°€Ã«ŠÂŸÃ•~Ã¬<œÃ«<Â¸Ã«Â©Â´  
Ã¬^~Ã¬Â • Ã•Â´ Ã¬ÂŒÂ¼Ã¬<Ã¬<œÃ¬~Â¸!)

### 1.11.1. Ã¬Â»Â"Ã...ÃŠÂ, Ã™•Ã¬Â,

Ã¬,,Â, Ã¬>Â¹Ã¬,Ã¬Ã¬Â´ÃŠÂ,ÃªÂ°€ Ã¬Â´Ã¬Â,, Ã¬>Â¹Ã¬,Ã¬Ã¬Â´ÃŠÂ,Ã¬—Ã¬,,œ Ã«ÂªÂ"Ã«"Â ÃªÂ²fÃ¬,, Ãª¬Â•Â"Ã•~ÃªÂ³Â  
Ã¬ž^Ã«Š"Ã¬ÂŸ€ Ã™•Ã¬Â,Ã•~Ã¬<Ã¬<œÃ¬~Â¸.

1.11.2. Ã¬Â´Ã¬Â,,Ã¬— Ã¬,Ã¬Ã¬ŠÂ©Ã¬^Ã«~ ÃªÂ,Â°Ã«ŠÂŸÃ«"Â¸Ã¬Â´ Ã¬•,,Ã¬ÂŸ Ã¬Â¼ŒÃ¬Â Â,  
Ã¬ž^Ã«Š"Ã¬ÂŸ€ Ã™•Ã¬Â,Ã•~Ã¬<Ã¬<œÃ¬~Â¸.

Ã¬ÂŸ€ Ã«" Ã¬fÃ¬,,Â,Ãž^ Ã«ÂŸÃ•~Ã¬žÃ«Â©Â´, ÃªÂµÃ¬Ã¬;Â°Ã¬Â²Â´, ÃªÂ²€Ã¬f%, ÃªÂ°œÃ«Â³,, Ã"ŒÃ«ŸÃ¬ÃªÂ•Â,Ã¬Â,, Ã«Â°  
ÃªÂ,Â°ÃŸ€ Ã«<Â¸Ã«ÂŸÂ, ÃªÂ,Â°Ã«ŠÂŸÃ«"Â¸Ã¬Â´ ÃªÂ´€Ã«Â|Ã¬ÃŒÃ"Ã«,,Ã¬—Ã¬,,œ Ã™œÃ¬,,Â±Ã™" Ã«Â Ã¬^~  
Ã¬ž^Ã¬ŠÂµÃ«<^Ã«<Â¸.

1.11.3. Ã¬žÂ Ã¬žÂ¬Ã¬Â Ã¬ŒÂ¼Ã«Â;Œ Ã¬•^Ã¬Â,,Ã•~Ã¬ÂŸ€ Ã¬•ŠÃ¬€ Ã"ŒÃ«ŸÃ¬ÃªÂ•Â,Ã¬Â,Ã¬  
~Â,Ã¬ÂŸŒÃ¬,, Ã¬^~Ã¬Â • Ã•~ÃªÂ³Â ÃªÂ•Â,Ã«"Â¸Ã¬,, Ã¬ŠÂ¹Ã¬Â, Ã¬Â¹Ã¬€ ÃªÂ±Â°Ã¬Â ^ Ã•~Ã¬<Ã¬  
Ã¬<ŒÃ¬~Â¸.

Ã«Â°Ã,Â¸ 4Ã¬—Ã¬,,œ Ã«ÂŸ€,,Â°, Ã«Â°Ã,Â¸ Ã"ŒÃ«ŸÃ¬ÃªÂ•Â,Ã¬Â,Ã¬,, ÃªÂ´€Ã«Â|Ã¬Ã•~Ã«Š" Ã¬f^ Ã¬<œÃ¬ŠÂ¸Ã...œÃ¬Â´  
Ã«Âª±Ã«Âª± Ã"ŒÃ«ŸÃ¬ÃªÂ•Â,Ã¬Â,Ã¬~ Ã¬Â,Ã¬Â|Ã¬,, Ã¬š"ÃªÂµÃ¬Ã•~ÃªÂ,Â° Ã¬œ,,Ã•Â´ Ã¬ÂŸ"ÃªÂ°€  
Ã«~Ã¬—^Ã¬ŠÂµÃ«<^Ã«<Â¸. Ã¬žÂ Ã¬žÂ¬Ã¬Â Ã¬œÂ¼Ã«Â;œ Ã¬•^Ã¬Â,,Ã•~Ã¬ÂŸ€ Ã¬•ŠÃ¬€ Ã"ŒÃ«ŸÃ¬ÃªÂ•Â,Ã¬Â,Ã¬€ Ã¬  
"ŒÃ«ŸÃ¬ÃªÂ•Â,Ã¬Â,Ã¬,, Ã¬ŠÂ¹Ã¬Â,Ã•~Ã«Š" ÃªÂ²fÃªÂ³Â¼ Ã¬—Â°ÃªÂ´€Ã«œ Ã¬f^ ÃªÂŸŒŒœÃ¬,, ÃªÂ°€Ã¬ÂŸ,,  
Ã¬,Ã¬Ã¬šÂ©Ã¬žÃ¬— Ã¬~Ã•~Ã¬—Ã¬ Ã™•Ã¬Â,Ã«~Ã¬—Â´Ã¬•Â¼Ã«ÂŸŒ Ã•Â©Ã«<^Ã«<Â¸. ÃªÂ•Â,Ã«ŸÃ¬Ã•œ Ã¬  
"ŒÃ«ŸÃ¬ÃªÂ•Â,Ã¬Â,Ã¬,, Ã¬,Ã¬Ã¬šÂ© Ã¬Â¸'Ã¬Â´Ã¬—^Ã«<Â¸Ã«Â©Â´, Ã¬Â´Ã¬Â œÃ«Š" Ã¬ÂŸŒŒœÃ«ÂŸ,,Ã•œ ÃªÂŸŒŒœœÃ¬,,  
Ã«Â³Â´Ã¬œÂ Ã•œ Ã«^,,ÃªÂµÂ°ÃªÂ°€ÃªÂ°€ ÃªÂ•Â,ÃªÂ²fÃ«"Â¸Ã¬,, Ã¬ŠÂ¹Ã¬Â,Ã•~ÃªÂ,Â° Ã¬Â,,ÃªÂ¹ŒÃ¬ÂŸ€ Ã¬ž^Ã™ Ã•~Ã¬ÂŸ€  
Ã¬•ŠÃ¬,, ÃªÂ²fÃ¬ž...Ã«<^Ã«<Â¸.

Ã→Â´Ã→Â œ iframe, dbreport, tag, sql, snarf, regex...Ã«“Â±Ã«“Â±Ã→,, Ã→Â·Â·Ã·Ã·~Ã→—Ã→, Ã→-Â´Ã«-Â±Ã-  
"œÃ«ÿÃ→Ã²Â·Â, Ã→Â, Ã→,, Ã→-Â´Ã«-Â±Ã→,Ã→Ã→šÂ©Ã→žÃ²Â°€ Ã→,Ã→Ã→šÂ©Ã·~Ã«Â Â±Ã²Â³Â Ã→œÃ«,,Ã·~Ã«Â©Â´Ã-  
"œÃ«ÿÃ→Ã²Â·Â, Ã→Â, Ã→,Ã→Ã→šÂ©Ã→~ Ã→šÂ¹Ã→Â, Ã·Ã¹Ã→€ Ã²Â±Â°Ã→Â´Ã→,, Ã→œ,,Ã·~Ã→—Ã→ Ã→-Â´Ã«-Â±Ã→Ã→Â´Ã«Â±Â°Ã-  
•Â Ã→^~ Ã→ž^Ã«Š” Ã→,Ã→Ã→šÂ©Ã→ž/ÃžÂ,Ã→Âš’Ã→ž/Ã²Â´€Ã«Â|Ã→Ã→žÃ→— Ã→~Ã·~Ã→—Ã→ Ã™·Ã→Â,Ã«~Ã→-Â´Ã→•Â¼Ã-  
•Â©Ã«^Ã«Â±.

Ã«œ€Ã²Â,Â° Ã→Â±’Ã→Â, Ã”œÃ«ÿÃ→Ã²Â·Â,Ã→Â, Ã·Ã·,Ã→Â¶œÃ→~ Ã«Â²Â©Ã«Â;Ã→€ Ã→-Â,Ã→Â œÃ«“Â Ã→Âš€  
Ã«Â±Ã→œÃ→—Ã→,,œ Ã«Â°œÃ²Â²Ã→Â·Â Ã→^~ Ã→ž^Ã→šÂµÃ«^Ã«Â±: **tiki-plugins.php**

# 1.12. Ã...œÃ«Âš^ Ã→—...Ã²Â·Â,Ã«Â´Ã→Â´Ã«“œ

Ã«Â±Ã→œÃ→—Ã→,,œ Ã«Â©”Ã«Â²Â”Ã«Â±Â¼ Ã→^~Ã→Â·Ã·~Ã→Â´Ã→œÃ→~Â±  
<http://themes.tiki.org/Upgrading>

Ã→Â¶”Ã²Â°€ Ã→fÃ→,,Â,Ã·œ Ã→,,Â±Ã«Â²...Ã→€ Ã→šÂ±Ã→f€Ã→Â¼Ã²Â³Â¼ Ã→...œÃ«Âš^ Ã«Â±Â¼ Ã→Â½Ã→-Â´ Ã«Â³Â´Ã→Â-  
Ã→œÃ→~Â±

## Ã→Â¶”Ã²Â°€ Ã«,,Ã→>€Ã→Â´ Ã·,,Ã→š”Ã·~Ã→Â´Ã«^Ã²Â¹œ?

Ã→Â¶”Ã²Â°€ Ã→,,Â±Ã«Â²...Ã→Â´ Ã·,,Ã→š”Ã·œ Ã²Â²Â½Ã→šÂ°, IRC Ã·Ã¹Ã→€ Ã²Â²œÃ→œÃ→œÃ→— Ã«Â´Ã→,Ã→~ Ã·~Ã→Â-  
Ã→œÃ→~Â±, Ã²Â·Â,Ã«Â|Ã→Ã²Â³Â Ã→Â´Ã²Â³Â³Ã→œÂ¼Ã«Â;œ Ã«Â±Ã→œ Ã«œÃ→•,Ã→~Â±Ã→...”Ã→,,œ Ã→šÂµÃ«“Ã·~Ã→Â´  
Ã«Â´Ã→šÂ©Ã→,, Ã†Â Ã«œ€Ã«Â;œ Ã→-Ã→Ã²Â,Â°Ã→~ Ã«Â´Ã→,Ã→,,œÃ«“Â±Ã→,, Ã→—...Ã²Â·Â,Ã«Â´Ã→Â´Ã«“œÃ·Â´  
Ã→ÂfÂ¼Ã→Â´œÃ→~Â±. Ã→Â´Ã«Â±Ã²Â²œ Ã·~Ã«Â©Â´, Ã²Â·€Ã·~Ã²Â»~Ã→,,œ Ã«,,Ã→>€Ã→,, Ã→ÂfÂ¼Ã→Â´œÃ→~  
Ã→ž^Ã→œÂ¼Ã«Â©Â°, Ã→f^ Ã→,Ã→Ã→šÂ©Ã→žÃ«“Â±Ã→—Ã²Â²œ Ã→%oÂ½Ã²Â²œ Ã→Â´Ã²Â·Â¼Ã·Â Ã→^~ Ã→ž^Ã«,,Ã«Â; Ã·~Ã«š”  
Ã²Â²fÃ→ž...Ã«^Ã«Â±.

Ã²Â´€Ã«Â²” Ãž~Ã→Â´Ã→Âš€

• Upgrade trunk

- Upgrade from unmaintained versions
- Upgrade 3.x to 3.latest
- Upgrade 2.x to 3.x
- Upgrade 1.9.x to 2.x
- Upgrade 1.9.x to 1.9.y
- Upgrade 1.8.x to 1.9.y
- Upgrade 1.7 to 1.8
- Upgrade
- Manual upgrade
- Archives Upgrade

~«Â³,,~¬Â¹Â

- ~¬—...~«Â°~¬Â´~ŠÂ,
- ~¬Â°~¬,Â ~¬—...~«Â°~¬Â´~ŠÂ,
- ~¬Â°~¬,Â ~¬—...~«Â·Â,~«Â ^~¬Â´~«“œ

~«Â³Â ~«Â, %o ~¬,Â¬~¬ŠÂ©~¬Ž~«“Â~¬,, ~¬œ,,~·œ ~«Â©”~«Â«Â”

[+]