

Ì,,ᄁÌ¹~

Í<°Í,ᄁë¥¼ Ì,,ᄁÌ¹~Í•~ê°, Ìœ,,Í•`Ì,,œëŠ" Ì>¹ ê°œë°œÌž Í~¹ì€ Í" „ë;œê°, ëž~ë" „Ì¼ Í•„ìš"ê°€ Ì—†ÌŠµë<^ë<ᄁ. Í<°Í,ᄁëŠ" Ì,,ᄁÌ¹~Ìžë¥¼ Ìœ,,Í•~Ì—
ëƐëë¶ëë¶,,Ì~ Ìž`Ì—...Ì,, ëƐëì< Í•~ëŠ" Ì,¬ìš©Í•~ê°, Íž „ë|¬Í•œ Ìœ,,ìžë"œ ê°,ë°~Ì~ Ì,,ᄁÌ¹~ê°€ë|¬Ìžë¥¼ ë³`Ìœ Í•~ê³ Ìž^ÌŠµë<^ë<ᄁ.
ë,~ë" „ìšëëŠ" Ì>¹Í~ „ÌšᄁíŠ „Ì Ìœì-´ÍƐì—Ì,,œ Ì™ „ëƒƐë Ì^~ Ìž^ÌŠµë<^ë<ᄁ..

Ì™ „Ì „Í•œ Ì´^ë³ Ìžë¼ë©´ (Í~¹ì€ Ìšì ´Í•~ëŠ" ê²ƒÌ,, ë³ „ë;œ Ì†<Ì•„Í•~ìšë Ì•ŠëŠ"ë<ᄁë©´), Í<°Í,ᄁì— Ì¹œì^™ Í•œ Í~ „ÌšᄁíŠ „Ì Ì,¬ìš©Ì,,
ê³ ë ᄁÍ•~Ì— Ì³`Ì<ÌœÌ~ᄁ. ëƐëë¶ëëë¶,,Ì€ Í<°Í,ᄁ Ì,,ᄁÌ¹~ë¥¼ ë¬´ëƒƐë;œ Ì™ „ëƒƐëìœÌ¼œ Ìᄁ,, ê²ƒÌž...ë<^ë<ᄁ.

-
- Ì,,ᄁÌ¹~
 - ê°œëìš"
 - ë<~ê³ „ë³ „ Ì,,ᄁÌ¹~
 - Ì,,ᄁÌ¹~Í•~ê°, Ì „Ì—
 - Pre-requisites
 - 1.1. Create the database
 - The Three steps of Database Setup.
 - 1.2. Download and unzip
 - 1.3. Upload to your webhost
 - 1.4. Go to your website.
 - Troubleshooting
 - 1.4.1. File and Folder permissions
 - 1.4.2. SuPHP Problems
 - 1.4.3. Permission Matrix

- 1.4.3.1. Option
- 1.4.3.2. Option
- 1.5. Run the Tiki installer (tiki-install.php)
 - Alternative "Step 5" without tiki-install.php
- 1.6. Log in for the first time
- 1.7. Change the default password.
- 1.8. Congratulations !
- 1.9. Configure Your Tiki
 - Add new features through post-install Profiles
- For more information on the Tiki installation process...

ê°œìš”

ì´ ë™ì~ìfë“æì€ í<°í,æ ì,,æì¹~ì— ëƒ€í•œ ê,°ë³, ê°œìš”ë¥¼ ì œê³µí•©ë<^ë<æ. ì¶”ê°€ ë™ì~ìfì€ [Tiki TV](#) ì™€[Tiki Movies](#) ë¥¼ ì°,ê³ í•~ì<- ì<œì~æ.



í<°í,æ ì,,æì¹~ê´€ëì¬ž í™”ë©`ì,, ì™”„ëƒ€í•~ëš” ê²fê³¼ ë°ì´í,,°ë² ì`ìšæ ì—°ê²°ì,, ì,,æì •í•~ëš” ê²fì,, í¬í•“í•œ ë,´ìš©ì,, ì,´íž´ë³`ì<œì~æ. ì´ ë™ì~ìfì€ ì´^ê,° ê´€ëì¬ž ëìœê¬, ì,ê³¼ ì¼ë°~ ê´€ëì¬ž íž~ì`ìš€ë,, ë³`ì—¬ìæë<^ë<æ.

ì¶œì²~ *Tiki for Dummies Smarties*



í<°í,æ ì,,æì¹~ê´€ëì¬ž í™”ë©`ì,, ì™”„ëƒ€í•~ëš” ê²fê³¼ ë°ì´í,,°ë² ì`ìšæ ì—°ê²°ì,, ì,,æì •í•~ëš” ê²fì,, í¬í•“í•œ ë,´ìš©ì,,

ì,´íŽ´ë³`ì<œì~¤. ì`ë™ì~ìfì€ ì´^ê,° ê´€ë|¬ìž ë|œê·,ì,ê³¼ ì¼ë°~ ê´€ë|¬ìž íŽ~ì`ì§€ë,, ë³`ì—¬ì¤ë<^ë<¤.

ì¶œì²~ *Tiki for Dummies Smarties*

í<°í,¤3 ì~ ê,°ì´^ ê°œìš”: ì,,¤ì¹~ì™€ í”„ë|œíŒŒì¼

ìf^ ì,,¤ì¹~ê´€ë|¬ìžì™€ í”„ë|œíŒŒì¼ ì~ ì<ê·œ ì,,,íŠ,ì~ì`ìš©í”„ê,ëž”ë“¤ì´ í<°í,¤3 ì—ì,,œ ìf^ë|ê²Œ ë“±ìž¥í•©ë<^ë<¤, ê,ë|¬ê³ ë<¤ìŒì~
12ë¶,,ê°,ì~ ìŠ¤í¬ë|°ì¸ìŠ¤ìŠ,ì—ì,,œ ê°,ëžµí•~ê²Œ ë³`ì<¤ ì^~ ìž`ìŠµë<^ë<¤:

{flash movie="http://blip.tv/play/AYGC22KUnlc" width="648" height="467" allowscriptaccess="always" allowfullscreen="true"
quality="high" }

ë<”ê³,,ë³,, ì,,¤ì¹~

ì,,ì¹~í•~ê,° ì,,ì—

í<°í,ë¥¼ ì,,ì¹~í•~ê,° ì,,ì—, ìš"êµ¬ì,¬í•ê³¼ ì,,ì¹~ì •ë³' ë¥¼ ì½ì-' ë³`ì<ìœì~. ìì ^í•œ ê³,,íš€ ê±±ì •ì' ì—†ëš" ì,,ì¹~ë¥¼
ë³`ìž¥í•©ë<^ë<. í<°í,ì~ ì>¹í~ìšíšê°€ í•,,ìš"í•~ì<ìœë<ë©', í<°í,ì¹œí™"ì í~ìšíšì~ ë³©ëìì,,ì,´íž'ë³`ì<ìœì~.

These instructions are intentionally generic, and should apply to most shared host installations. See [Installation Guides](#) for instructions for specific combination of operating system and web servers.

Pre-requisites

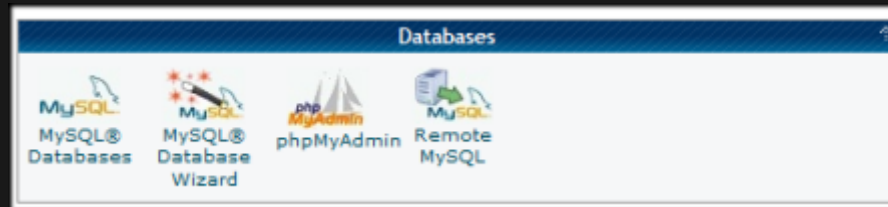
This guide assumes you have:

- FTP or SSH (shell) access to a webserver (such as Apache) with PHP5
 - Typically, you upload the files via a FTP client such as [WinSCP](#) or [FileZilla](#).
- access to a MySQL database (should be provided by your webhost)

1.1. Create the database

Tiki requires a MySQL database.

Many hosts offer a point & click interface to create databases and database users. For example, if your web host has [cPanel](#) you probably can see [phpMyAdmin](#) in the main menu or a the section labeled **Databases**.



The MySQL and phpMyAdmin applications in cPanel 11.

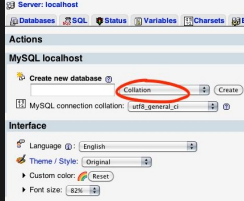
Creating a database (and a database user) is a very simple operation. Essentially you will create a blank (empty) database that the Tiki installer will later populate with the correct tables and data.

THE THREE STEPS OF DATABASE SETUP.

1. Create a database.

- You can name the database anything you want, but don't get fancy with the name – you can use **tiki**. Depending on your web host, your full database in phpMyAdmin may be listed as *accountname_tiki*.

Note: By default, Tiki uses **UTF-8** for your database encoding. We strongly encourage you to select "utf8" in the "**collation**" drop-down box in phpmyadmin (or similar), in the field shown in the following image:



If you select a different encoding method, you may need to manually update your **../db/local.php** file.

Tip: If you plan on having multiple Tiki installations, don't use **tiki** as the database name.

- Be sure to record the database name, you will need it later.

2. Create a database **user** (with password).

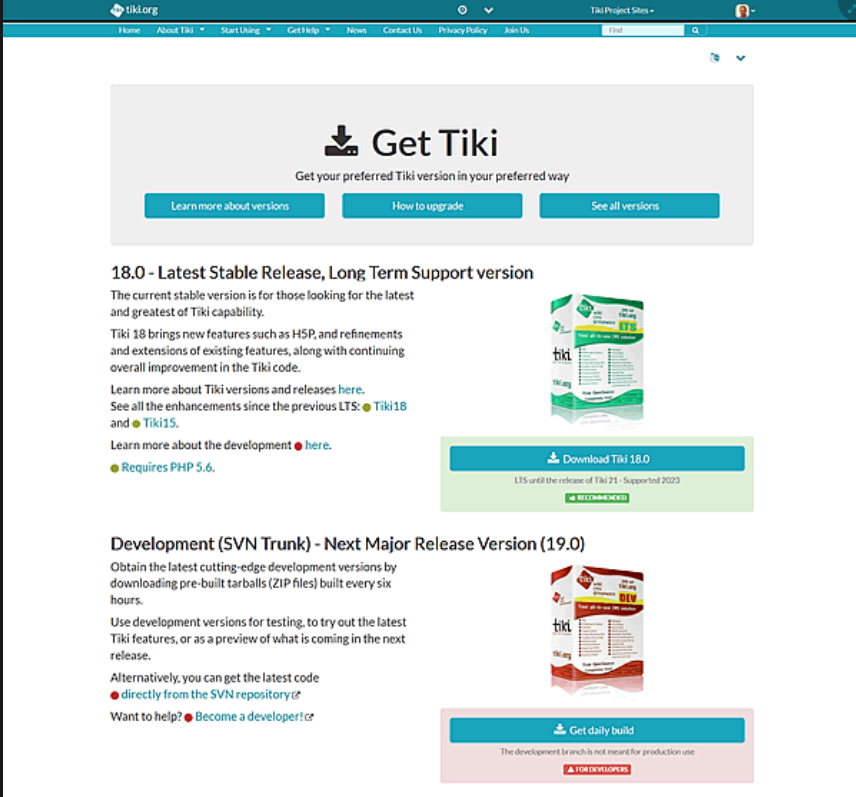
- Again, don't get fancy with the database username. In fact, you can use the same name that you selected for the database (in step 1).
- Select a **strong** password. You can easily recover your database username and password if necessary (by reviewing the `../db/local.php` file in your Tiki directory).
- Be sure to record the username and password. You will need it later.

3. Assign **all** database permissions to the database user that you created (in step 2).

Congratulations. You now have a database that is ready to use, as well as a database user (and password) with the necessary permissions.

1.2. Download and unzip

Download the current version of Tiki to your local computer from <http://tiki.org/download>.



Download button on tiki.org

From Tiki for Dummies Smarties

The full Tiki archive file download is +20MB and is available in a variety of formats.

After downloading the Tiki archive file, decompress (unzip) the file to your local PC.

1.3. Upload to your webhost

Use FTP (or SCP, SFTP, Rsync, SSH, etc) to connect to your webhost.

Once connected, find your web directory. It is often called `www` or `public_html`.

Note: This directory name may vary, depending on your webhost.

Upload all the Tiki files from your PC to you webhost.

- If you upload the Tiki files to the root of your web directory, Tiki will be accessible directly from the URL: **http://www.yourdomain.com**
- If you have installed (or plan to install) other applications on your webhost, you may consider putting Tiki in its own subdirectory (for example: **http://www.yourdomain.com/tiki/**). Keep in mind that this might mean that you will have to manually edit the file .htaccess to activate the Tiki subdirectory (for example this "RewriteRule ^(.+)\$ /tiki-index_raw.php?page=\$1 [QSA,L]" might need to become this "RewriteRule ^(.+)\$ **/tiki/**tiki-index_raw.php?page=\$1 [QSA,L]")

Time for more coffee?

1.4. Go to your website.

Open your web browser and access the web directory in which you copied the Tiki files (for example: **http://www.yourdomain.com/tiki/** or simply **http://www.yourdomain.com** if you copied Tiki to the root of your web directory.

The Tiki Installer Welcome screen appears.



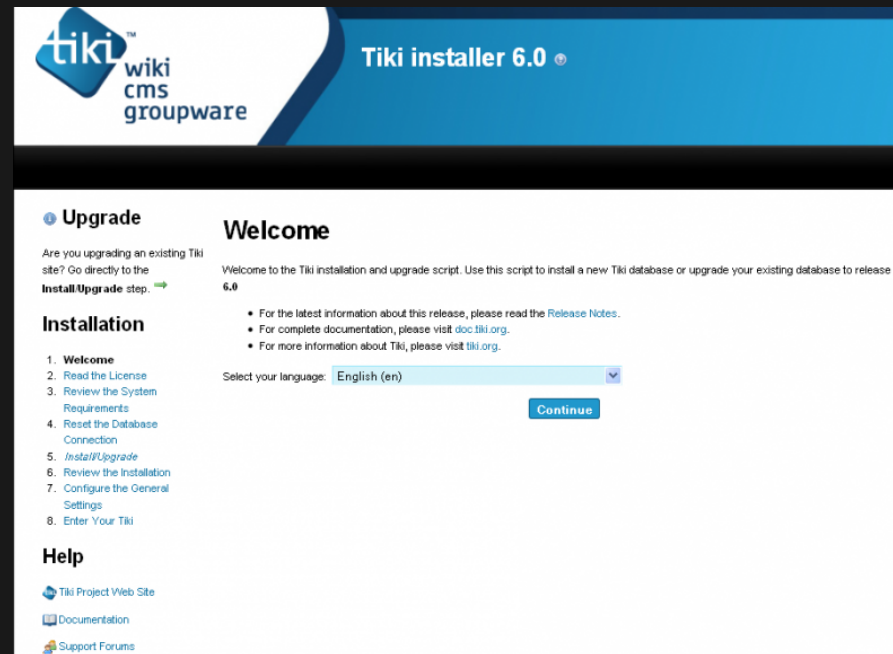
From *Tiki for Dummies Smarties*

The Tiki Installer Welcome screen appears.



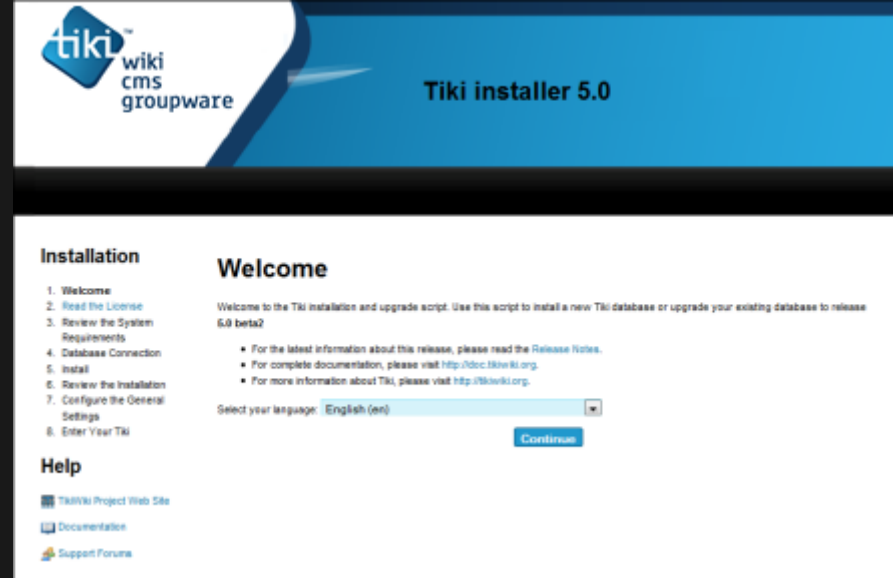
From Tiki for Dummies Smarties

The Tiki Installer Welcome screen appears.



From Tiki for Dummies Smarties

The Tiki Installer Welcome screen appears.



From Tiki for Dummies Smarties

The Tiki Installer Welcome screen appears.



The Tiki Installer Welcome screen appears.



You should see a message indicating that Tiki could not connect to the database and prompting you to run the Tiki installer (tiki-install.php).



This message is normal and indicates that you are ready to install Tiki.

The Tiki Installer includes important links to the [ReleaseNotes](#) and [Documentation](#). Be sure to review these documents before installing Tiki.

Troubleshooting

If your browser returns an error such as **Parse error: syntax error, unexpected T_STRING**, you may have the incorrect PHP version.

Starting with **Tiki 3.0**, Tiki requires **PHP5**. Review the **_htaccess** file included in the Tiki archive file for instructions on activating PHP5.

🔗 See the [Installation FAQs](#) for more help.

1.4.1. File and Folder permissions

If your server is unhappy with Tiki file and folder permissions (this is dependent on server configuration), you may get an error message or blank pages. These failed attempts are typically in the error log (ask your web host to know where they are as it's different depending of your setup)

Too few permissions

If a message appears indicating that specific directories are not writable, you will need to change the permissions on the indicated directories. Tiki will attempt to verify that it can read (and write) to all necessary directories. This error message will include instructions about how to resolve the issue.

Too many permissions

If you are getting Internal Server Error 500, blank pages or similar, it could be that the permissions on the files are not appropriate for your webhost.

If your permissions are currently at "777", use your FTP client to change the files to "755". If Tiki is installed in a directory, make sure to also change the permission of the folder which contains the tiki files.

If you have shell access, you can run:

```
sh setup.sh
```

and answer any questions. If you don't know what to answer, just click "enter" to keep the defaults.

```
root@yourserver:/var/www/tiki# sh setup.sh Tiki setup.sh - your options =====
```

Composer: If you are installing via a released Tiki package (zip, tar.gz, tar.bz2, 7z), you can and should skip using Composer. If you are installing and upgrading via SVN, you need to run Composer after 'svn checkout' and 'svn upgrade'. More info at <https://dev.tiki.org/Composer> c run composer and exit (recommended to be done first) For all Tiki instances (via SVN or via a released package): f fix file & directory permissions (classic default) o open file and directory permissions (classic option) S clear screen predefined Tiki Permission Check models: ----- 1 paranoia 2 paranoia-suphp w suphp workaround 3 sbbox W sbbox workaround 4 mixed 5 worry 6 moreworry 7 pain 8 morepain 9 risky a insane q quit x exit There are some other commands recommended for advanced users only. More documentation about this: <https://doc.tiki.org/Permission+Check> Your choice [f]?

The option preselected in "Our choice" will initially be "c", to run "composer" script and get the required php dependencies for you. and in a second step, it will suggest "f", to fix file and directory permissions (classic default option). You can choose at any time the letter that best suits your needs, among the options offered.

If "sh setup.sh" doesn't work for you, you may try, in your ./tiki/ directory

```
chmod -R 777 ./db ./dump ./img/wiki ./img/wiki_up ./img/trackers ./modules/cache ./temp ./temp/cache ./temp/templates_c ./templates ./styles ./whelp/
```

Another way is to set permissions for all directories and then set permissions for all files. For example, to set the permissions for all directories to **777** and the permissions for all files to **644**, use the following separate commands through shell access:

```
find [YOURDIR] -type d -exec chmod 777 {} \; find [YOURDIR] -type f -exec chmod 644 {} \;
```

After correcting any directory or file permission problems, visit **tiki-install.php** to continue.

1.4.2. SuPHP Problems

Systems with SuPHP need permissions 755 at maximum. Group **must not** be allowed to write. This includes the complete path in the filesystem, not only document root of the webserver. Wrong permissions may lead to **500 Internal Server Error** here. On the other hand less permissions (namely 750 without *x/execute/subdir entry* for webserver) may lead to **403 Forbidden Error**.

1.4.3. PermissionÂ Matrix

Several usecases and minimum to maximum permissions you may try if something doesn't work properly. Permissions refer to data directly accessed by the webserver (files included by Tiki itself may and should have less permissions):

Ownership

no SuPHP

username:groupname	files / <i>subdirectories</i>
--------------------	-------------------------------

webserver:webserver	600 - 666 / 700 - 777
---------------------	-----------------------

user:user	604 - 666 / 705 - 777
-----------	-----------------------

user:webserver	660 - 666 / 770 - 777
----------------	-----------------------

webserver:user	660 - 666 / 770 - 777
----------------	-----------------------

with SuPHP

files / subdirectories

?

600 - 644 / 701 - 755

?

?

1.4.3.1. OPTION

For your consideration

```
find . -type d -exec chmod 755 {} \; ; chmod 755 . ; find . -type f -exec chmod 755 {} \; ; chmod 751 db/local.php
```

1.4.3.2. OPTION

The following commands might be useful. In particular, it might help you use an IDE (PhpStorm), etc:

For your consideration

```
$ export PathToTiki="/var/www/tiki" $ export WebServerOwner="www-data" $ sudo usermod -aG ${WebServerOwner} $(whoami) $ sudo chown -R ${WebServerOwner}: ${PathToTiki} $ sudo chmod -R g+rw ${PathToTiki}
```

In English, the above code adds you to the web-server group; forces the tiki tree to be owned by the web-server user and group; and then makes sure the tiki tree is readable and writable by the web-server group (you). Suggestions welcome!

1.5. Run the Tiki installer (tiki-install.php)

Open a web browser to: **<http://www.yourdomain.com/tiki-install.php>** (or **<http://www.yourdomain.com/tiki/tiki-install.php>** if you installed Tiki in a subdirectory).

The first page of the Tiki Installer appears. This installer will allow you to:

- Pick a language
- Test your server settings
 - If the installer detects that some of your server settings are inadequate, it will suggest changes to comply to the [Requirements](#).

- Enter your database name, username, and password.

This is the information from the database that you created earlier. You ***did*** remember to write it down, right?

- Create/update the database
- Set some preferences, such as admin email
- Disable the install script
- and more

Complete each page of the Tiki Installer.

Alternative "Step 5" without tiki-install.php

If you are unable to complete the Tiki Installer, continue with a [Manual Installation](#).

1.6. Log in for the first time

Log in using the login box in the right-hand column.

1. Enter those informations :

1. **user:** Enter *admin*

2. **pass:** Enter *admin*

2. Click **login**.

1.7. Change the default password.

Use a strong password. You may want to logout right away, and login again, letting your password manager record your password.

1.8. Congratulations !

It is recommended to create a new user and give him admin privileges instead of regularly using the admin account. You can now explore the interface but you should check the extra steps before to get you started.

1.9. Configure Your Tiki

Please visit [Initial Configuration](#) to explain the recommended next steps, or [configuration](#) for the table of contents related to configuring Tiki.

Add new features through post-install Profiles

Starting in [Tiki3](#), you can enable several settings/permissions/content in sets altogether in a single go, in order to provide a common feature to your tiki site (make it multilingual, add freetags, configure it as a Collaborative environment, ...). And all that with a just few clicks through the [Profile Manager](#) from "**Admin > Profiles**".

Read more about it at [Profiles](#).

For more information on the Tiki installation process...

Related pages:

[Installation FAQ](#)

[Installation Guides](#) -

recipes, tips and detailed knowledge about specific hosting environments

[Migrate to Tikiwiki](#)

[Move Tiki to a new server](#)

[Reinstall](#) - to point tiki to a new Database or re-run an upgrade

[Tiki in Ten minutes](#) - a recipe for command line installations.

[Fantastico Installation Using SSH](#) (for newbies)

[Manual Installation](#)

[MultiTiki](#)