

Google Map Details

There are some improvements made to Tiki to take advantage of [Google Maps](#).

Geolocation of Tracker items

(for Tiki version 1.10)

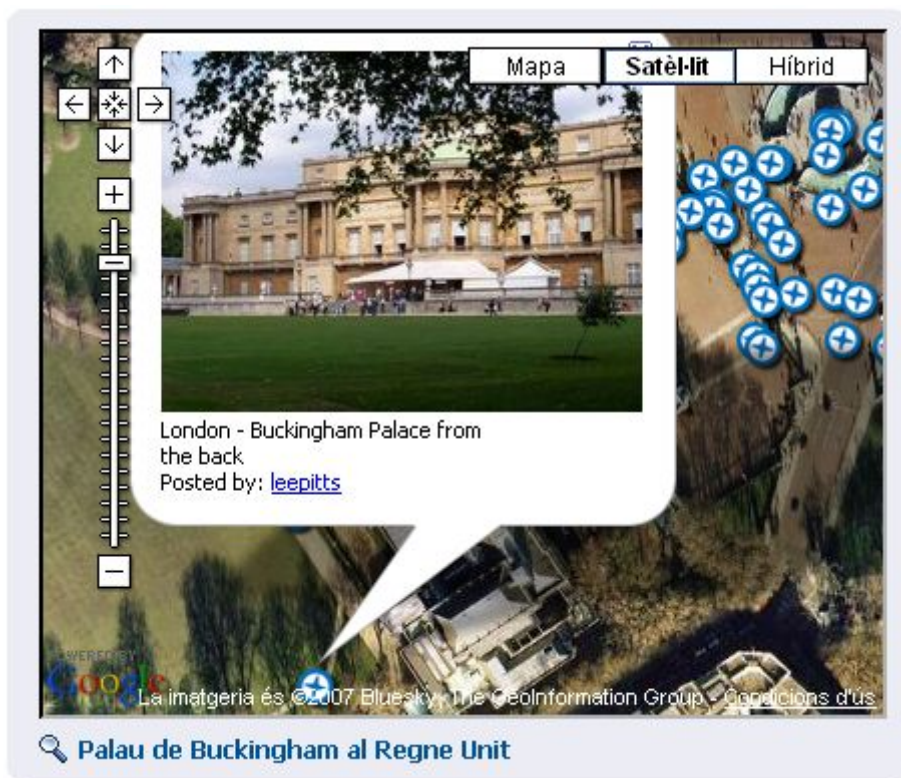
Items in a tracker can be geolocated:



Panoramio

Other similar features (which also Google Maps) could be introduced in your Tiki installation.

For instance, Panoramio, a photo-sharing community using Google Maps ("*Discover the world through satellite photos*" - <http://www.panoramio.com>).



This kind of simple feature could be included through creating and using those two files in your tiki installation:

tiki-panoramio.php

```
<?php
include 'tiki-setup.php';

$default_lon = '2.338';
$default_lat = '48.89';
$default_zoom = '3';
$default_kind = '2';

if (isset($_REQUEST['lon'])) { $lon = preg_replace('/[^0-9\.-]/','',$REQUEST['lon']); }
```

```
else { $lon = $default_lon; }
if (isset($_REQUEST['lat'])) { $lat = preg_replace('/[^0-9\.-]/','',$REQUEST['lat']); }
else { $lat = $default_lat; }
if (isset($_REQUEST['zoom'])) { $zoom = preg_replace('/[^0-9]/','',$REQUEST['zoom']); }
else { $zoom = $default_zoom; }
if (isset($_REQUEST['kind'])) { $kind = preg_replace('/[^0-9]/','',$REQUEST['kind']); }
else { $kind = $default_kind; }

$smarty->assign('lon',$lon);
$smarty->assign('lat',$lat);
$smarty->assign('zoom',$zoom);
$smarty->assign('kind',$kind);

$smarty->assign('mid','tiki-panoramio.tpl');
$smarty->display('tiki.tpl');
?>
```

templates/tiki-panoramio.tpl

```
<form>
<input type="text" name="lat" value="{ $lat}" size="8" />
<input type="text" name="lon" value="{ $lon}" size="8" />
<input type="text" name="zoom" value="{ $zoom}" size="2" />
<input type="text" name="kind" value="{ $kind}" size="2" />
<input type="submit" name="act" value="{tr}send{/tr}" />
</form>
<div>Map is grabbed with panoramio plugin.</div>
<iframe
src=http://www.panoramio.com/plugin.php?lt={ $lat}&ln={ $lon}&z={ $zoom}&k={ $kind}
width="100%" height="600px" border="0" style="border:0;"></iframe>
```

Technical details

This implementation uses v2 of the google map API, documented on <http://www.google.com/apis/maps/documentation/reference.html>

Related pages

- [Google Maps](#)
 - [Google Maps User](#)
 - [Google Maps Admin](#)
- <http://www.panoramio.com>
- <http://tikiwiki.org/TikiPanoramio>