


# Statistics (Stats)

This admin panel includes the Statistics and Analytics admin settings available in Tiki.

**To access:** Click the **Statistics** icon  on the [Admin Panel](#)  
or Access <http://example.org/tiki-admin.php?page=statistics>

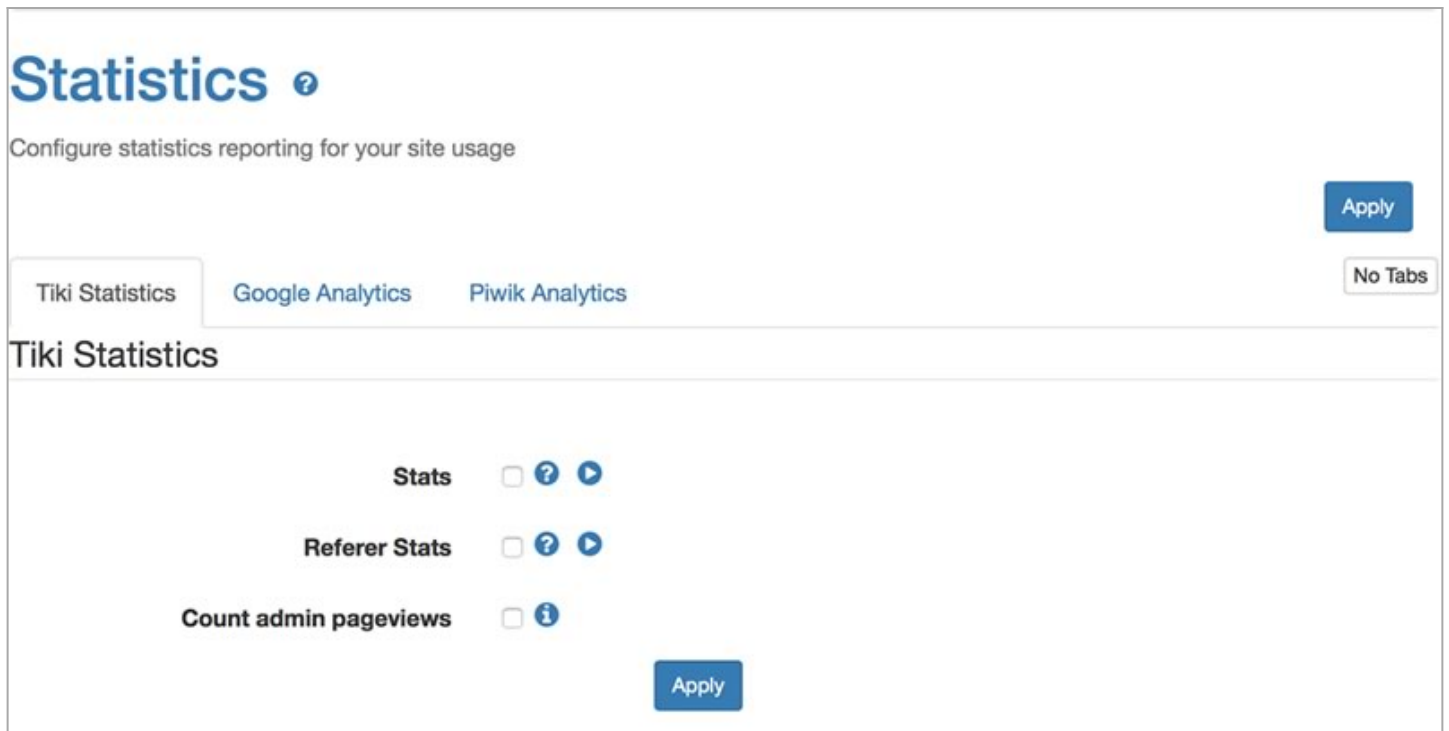
## Key features

- Tiki Stats
  - Usage for Tiki and Tiki feature - Good and basic to track website usage.
- Google Analytics and Google Chart (require Google analytics account) - Analytics data.
- Piwik Analytics (require Piwik server) - Analytics data with custom options.

## Tiki stats

Data are displayed accordingly to your feature usage. IE: If you don't use a feature you won't see anything for it. It also include a "Referer Stats" option to track referer to your website.

### Tiki stats admin panel



The screenshot shows the 'Statistics' admin panel. At the top, it says 'Statistics' with an information icon. Below that, it says 'Configure statistics reporting for your site usage'. There are three tabs: 'Tiki Statistics' (selected), 'Google Analytics', and 'Piwik Analytics'. An 'Apply' button is in the top right, and a 'No Tabs' button is in the bottom right. Under the 'Tiki Statistics' tab, there are three settings:

- Stats**:  ? ▶
- Referer Stats**:  ? ▶
- Count admin pageviews**:  i

An 'Apply' button is located at the bottom right of the settings area.

### Tiki stats user page

## Stats

Tiki Statistics | Piwik Analytics No Tabs

[Site](#) | [Wiki](#) | [File Galleries](#) | [Articles](#) | [User](#)

### Site Stats

|                                 |  |
|---------------------------------|--|
| Date of first pageview          | Wednesday January 27, 2016   |
| Days since first pageview       | 14   |
| Total pageviews                 | 69   |
| Average pageviews per day (pvs) | 4.93   |
| Day with the most pageviews     | Sunday January 31, 2016 (18 pvs)   |
| Days with the fewest pageviews  | Wednesday January 27, 2016 (2 pvs)<br>Thursday February 4, 2016 (2 pvs)<br>Saturday February 6, 2016 (2 pvs) |

### Wiki Stats

|                           |              |
|---------------------------|--------------|
| Wiki Pages                | 2            |
| Size of Wiki Pages        | 0.00134 Mb   |
| Average page length       | 670.00 bytes |
| Versions                  | 53           |
| Average versions per page | 26.50        |

## Google Analytics

See: [Google Analytics](#)

## Piwik Analytics

For information about Piwik, see: [Piwik Web analytics](#)

### Piwik Analytics admin panel

You need to set the URL to your Piwik server. IE : "http://mypiwik.com".  
 You need to set the Id of the website you want to display the statistics. IE : "1".

## Statistics

Configure statistics reporting for your site usage

[Apply](#) No Tabs

Tiki Statistics | [Google Analytics](#) | [Piwik Analytics](#)

### Piwik Analytics

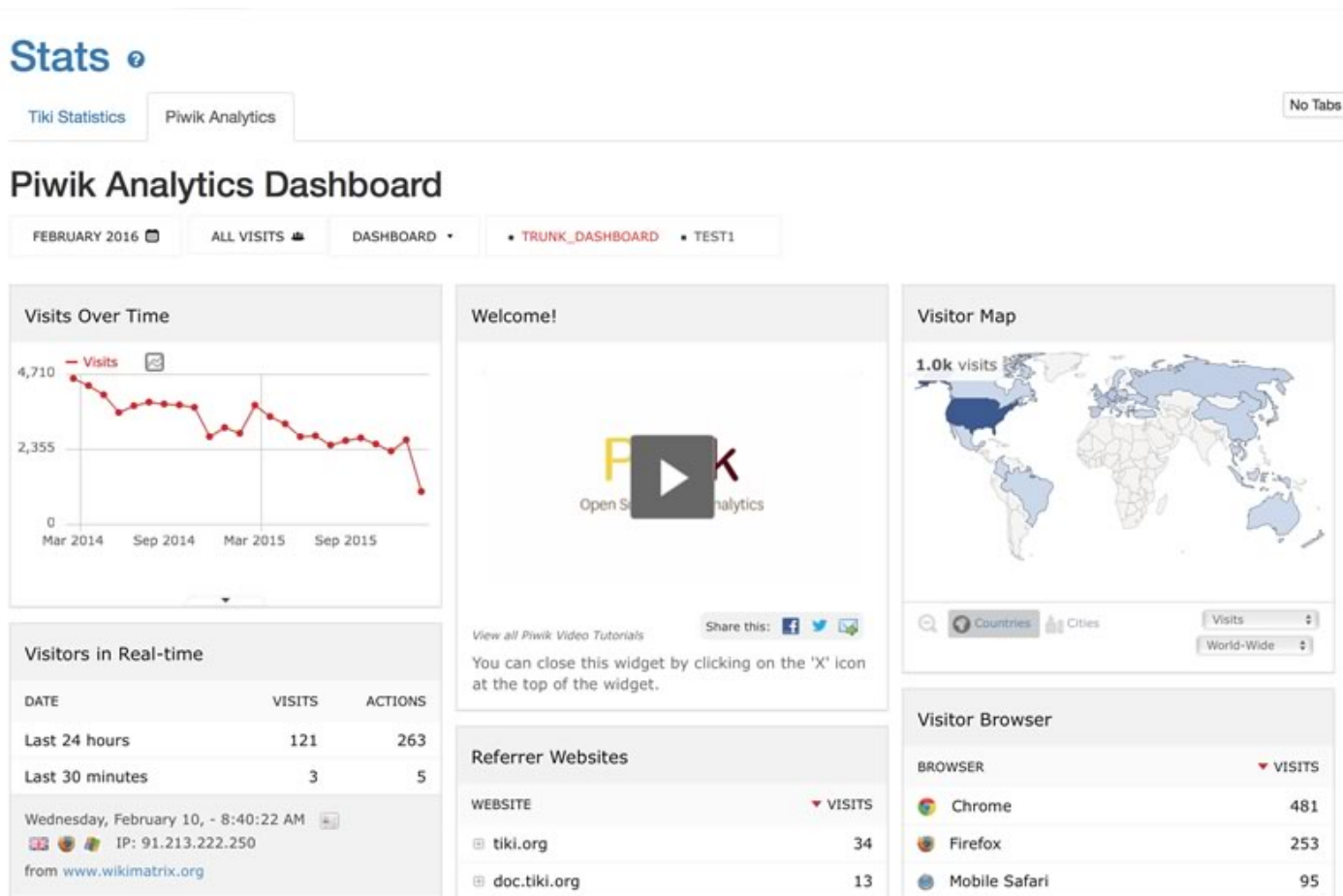
**Piwik server url**

**Site Id**

[Apply](#)

## Piwik Analytics user page

It is set to Piwik default dashboard but you can customise it accordingly to your need. (check Piwik widget page to review available modules)



## Permission

Users with the `tiki_p_view_stats` permission can view several site statistics (stats) from the stats screen, the stats section can be accessed from the main application menu.

See also:

- [Search Stats](#)
- [Referer Stats](#)

## Alias

- [Statistics](#)
- [Statistics-Admin](#)