

Google Map Details

There are some improvements made to Tiki to take advantage of [Google Maps](#).

Geolocation of Tracker items

(for Tiki version 1.10)

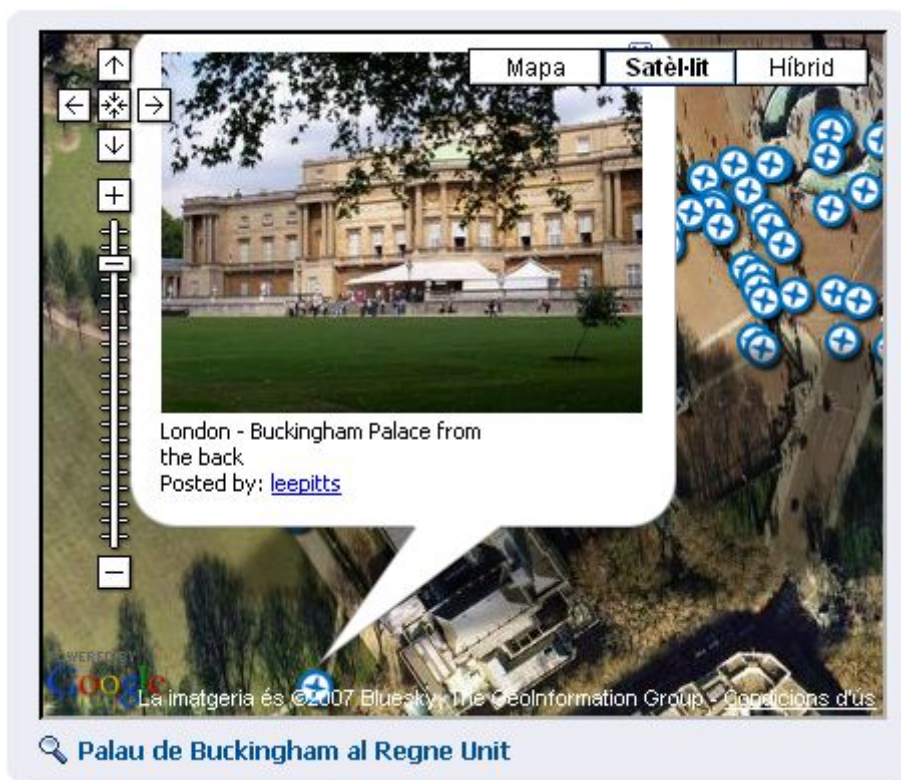
Items in a tracker can be geolocated:



Panoramio

Other similar features (which also Google Maps) could be introduced in your Tiki installation.

For instance, Panoramio, a photo-sharing community using Google Maps (*"Discover the world through satellite photos"* - <http://www.panoramio.com>).



This kind of simple feature could be included through creating and using those two files in your tiki installation:

tiki-panoramio.php

```
<?php include 'tiki-setup.php'; $default_lon = '2.338'; $default_lat = '48.89'; $default_zoom = '3'; $default_kind = '2'; if (isset($_REQUEST['lon'])) { $lon = preg_replace('/[^0-9\.-]/', '', $_REQUEST['lon']); } else { $lon = $default_lon; } if (isset($_REQUEST['lat'])) { $lat = preg_replace('/[^0-9\.-]/', '', $_REQUEST['lat']); } else { $lat = $default_lat; } if (isset($_REQUEST['zoom'])) { $zoom = preg_replace('/[^0-9]/', '', $_REQUEST['zoom']); } else { $zoom = $default_zoom; } if (isset($_REQUEST['kind'])) { $kind = preg_replace('/[^0-9]/', '', $_REQUEST['kind']); } else { $kind = $default_kind; } $smarty->assign('lon',$lon); $smarty->assign('lat',$lat); $smarty->assign('zoom',$zoom); $smarty->assign('kind',$kind); $smarty->assign('mid','tiki-panoramio.tpl'); $smarty->display('tiki.tpl'); ?>
```

templates/tiki-panoramio.tpl

```
<form> <input type="text" name="lat" value="{ $lat}" size="8" /> <input type="text" name="lon" value="{ $lon}" size="8" /> <input type="text" name="zoom" value="{ $zoom}" size="2" /> <input type="text" name="kind" value="{ $kind}" size="2" /> <input type="submit" name="act" value="{tr}send{/tr}" /> </form> <div>Map is grabbed with panoramio plugin.</div> <iframe src=http://www.panoramio.com/plugin.php?lt={ $lat}&ln={ $lon}&z={ $zoom}&k={ $kind} width="100%" height="600px" border="0" style="border:0;"></iframe>
```

Technical details

This implementation uses v2 of the google map API, documented on <http://www.google.com/apis/maps/documentation/reference.html>

Related pages

- [Google Maps](#)
 - [Google Maps User](#)
 - [Google Maps Admin](#)
- <http://www.panoramio.com>
- <http://tikiwiki.org/TikiPanoramio>