

Note: This needs some work to be ported to [Bootstrap](#) version 5 in [Tiki25](#)

Theme customizer

In [Tiki18](#), it was called "Style Guide Tool", but was renamed to "Theme customizer" in [Tiki19](#) to be more descriptive. There were also some changes as:

- Tiki18 uses Bootstrap 3 with Less
- Tiki19 uses Bootstrap 4 with Sass

New in [Tiki18](#), the Theme Customizer is an interactive page for editing site colors, fonts, and other style details, with the results shown in real time. The generated code can be input as custom CSS on the Look and Feel admin page, to modify the appearance of the Tiki site. This tool is for making overall, global changes.

Theme Customizer

Colors

Header	Body	Footer	Text	Links
				
#343a40	#ffffff	#ffffff	#212529	#0004ff

Sample Text

In mauris integer etiam aliquet integer duis rhoncus [ultrices](#) [cras](#) in habitasse ac sociis porttitor placerat ac porttitor, in ac. A, tristique [dapibus](#) [mauris](#), vut et porta? Enim, porta penatibus, augue egestas aliquam eu velit placerat, sociis hac et, pulvinar [tincidunt](#) [amet](#) ut turpis dapibus. Dolor. Lundium rhoncus elementum vel. Tempor sit nisi aliquam ut augue tincidunt tincidunt cum [egestas](#) [massa](#), nunc etiam ac scelerisque auctor sed sed facilisis!

Generate Custom CSS

☐ Keep changes after refresh

Select a section:

Theme Customizer Overview

How to activate it

To access the tool, go to the Look and Feel admin page ([tiki-admin.php?page=look](#)), and the "Customization" tab. The activation checkbox is near the bottom of the page. If you don't see it, the reason is probably that Advanced features aren't being displayed, so follow the instructions in the box below.

Activate the feature by checking the checkbox and clicking the "Apply" button. When the page refreshes, hover over the Theme Customizer "Actions" icon and, in the popup, click "View". This opens the Theme Customizer page.

Editing

Theme Customizer tool

Edit CSS

Tiki template viewing

Edit templates

Actions

 View



Theme Customizer Checkbox

How to use it

The tool works with the theme that is currently active at the site. Shown here are the Slate and TheNews themes.

Tables

Striped table

Version	Star	Year
12.x	Altair	2013
13.x	Fomalhaut	2014
14.x	Peony	2015
15.x	Situla	2016
16.x	Tabby's	2016
17.x	Zeta Boötis	2017

Bg (odd rows):

#353a41



Bg (even rows):

#2e3338



Text color:

#c8c8c8



Slate theme

Tables

Striped table

Version	Star	Year
12.x	Altair	2013
13.x	Fomalhaut	2014
14.x	Peony	2015
15.x	Situla	2016
16.x	Tabby's	2016
17.x	Zeta Boötis	2017

Bg (odd rows):

#f9f9f9



Bg (even rows):

#ffffff



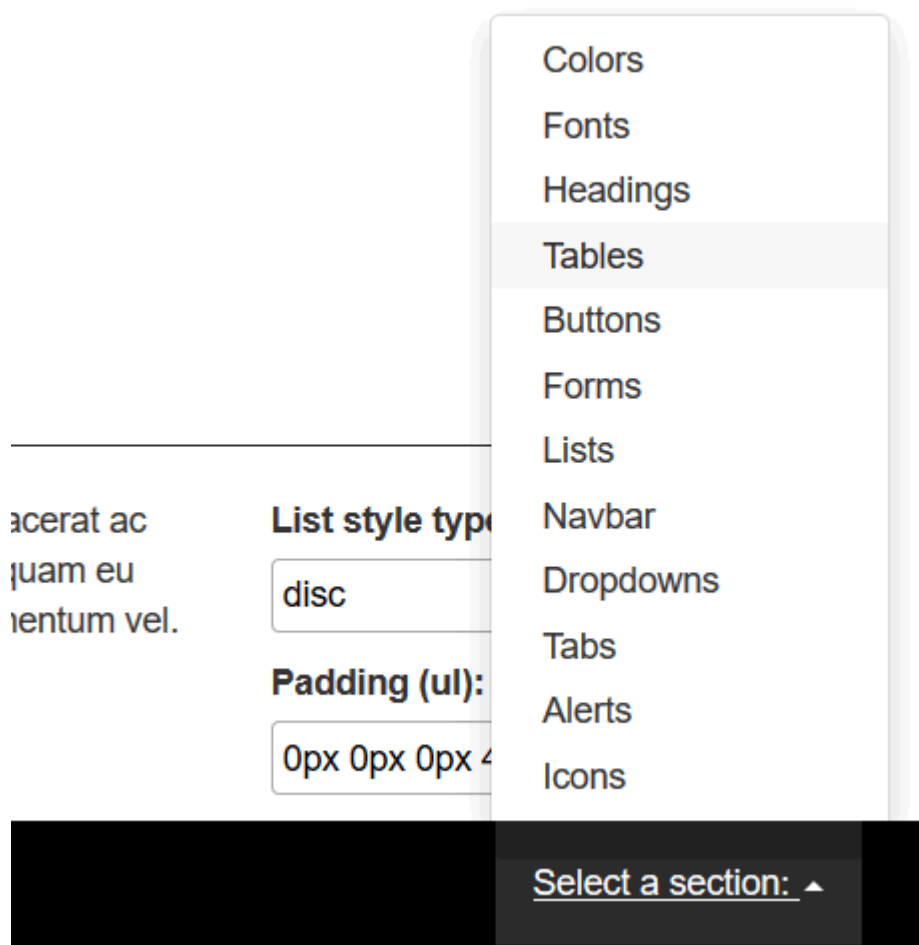
Text color:

#333333



TheNews theme

There are sections of the tool for these page elements: page colors, fonts, headings, tables, buttons, forms, lists, navbar, dropdowns, tabs, alerts, and icons. At the page bottom there is a "Select a section" link for navigating to the sections in the page.



Colors can be selected by clicking in the square sample area for each item, which causes a colorpicker to display. Or the CSS hex value can be edited directly.

Headings

h1. Bootstrap heading

Font size: 36px

Font weight: 500

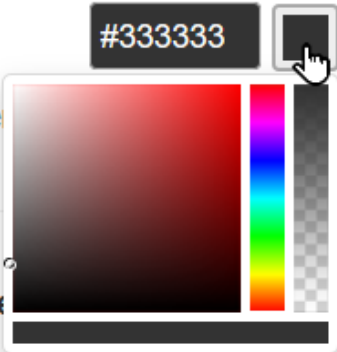
Spacing: 0

Color: #333333

☐ Upper

Font size

Font weight: 500



Colorpicker

Changes such as font size and style affect the those properties on the HTML body tag, meaning that the changes will be implemented throughout the site unless they are overridden by a more-specific CSS rule for a particular page element.

How to use the results - as CSS

After making the desired edits, to save the results as CSS code, click the "Generate Custom CSS" button.

Custom CSS

```
/*
=====
Theme Customizer Generated CSS
=====
*/
a {
  color: #0004ff;
}
.h6 {
  font-size: 16px;
  font-weight: 500;
  letter-spacing: 55;
  color: #212529;
  text-transform: none;
}
```

Generate Custom CSS

☐ Keep changes after refresh

Select a section:

Custom CSS

To use the new custom CSS, copy it from the text area and paste it into the Custom CSS text area on the Look and Feel admin page. Generating custom CSS with this tool actually produces the CSS for all the items on the Theme Customizer page, not just for the edited/changed items. To reduce the amount of redundant CSS rules, the custom CSS could be edited to retain just the changed rules, and the other,

unchanged rules could be removed (if you are familiar enough with editing CSS). [This redundancy should be improved in future development.]

As Look and Feel custom CSS, these style rules will of course affect any theme that is in effect at the site, and could have unwanted effects if a theme is selected for use other than the theme whose rules were customized with the Style Guide tool. This is something to consider if more than one theme is used at the site, such as if users have permission to select a theme for their personal use.

(More information on using custom Less variables is coming soon.)